

Camden Council Top Level Structure Chart



Chief Executive
Jon Rowney



Executive Directors
Corporate Services (Joint, Interim)
**Kathryn Myers & Hanad
Mohamed**



Executive Director
Adults and Health
Jess McGregor



Executive Director
Children and Learning
Tim Aldridge



Executive Director
Investment Place and
Opportunity
David Burns



Deputy Chief Executive /
Executive Director
Homes and Communities
Gillian Marston



Borough Solicitor
Andrew Maughan



Director of Health
and Wellbeing
Kirsten Watters



Director of People
& Inclusion
Joanna Brown



Director of Corporate
Strategy, Design and
Insight
Osian Jones

Last updated: 1 August 2025

Executive Director Corporate Services (Interim)
Kat Myers

Executive Director Corporate Services (Interim)
Hanad Mohamed

**Participation,
Partnerships &
Communications**

Kat Myers

Strategic
Communications

Media & External
Relations

Participation &
Partnerships

Member Support

Chief Executive Office

Cabinet Office

Community
Partnerships

**Strategy Design &
Insight**

Osian Jones

Head of Corporate
Strategy

Service & Policy Design

Strategic Delivery &
Operations

Insights, Learning and
Impact

Principal Policy &
Projects Officer

Head of Strategy

Finance
[Interim Section 151
Officer]

Daniel Omisore

Strategic Finance &
Business Partnering

Heads of Finance

Treasury, Pensions &
Financial Transactions

Chief Accountant

Internal Audit,
Investigations
& Risk

Council Tax, Business
Rates & Benefits

Credit Control &
Income Management

**Chief Experience &
Information Officer**

Tariq Khan

Digital Products and
Services

Chief Data Officer

Engineering

Operations

Technology

Customer &
Registration Services

**Borough Solicitor,
Law & Governance**
[Monitoring Officer]

Andrew Maughan

Legal Services &
Deputy Borough
Solicitor

Business Support

Democratic Services

Electoral Services

Mayor's Office

**Equality & Community
Strength**

Hanad Mohamed

Equalities & Social
Purpose

Refugee Communities

Debt & Financial
Resilience

People & Inclusion

Jo Brown
(Reporting to Deputy
Chief Executive)

People Relationship
Leads

People Operations Lead

Inclusion Cultural
Change

Innovation, Insight &
Learning

Relational Practise &
Leadership

Employment & Total
Reward

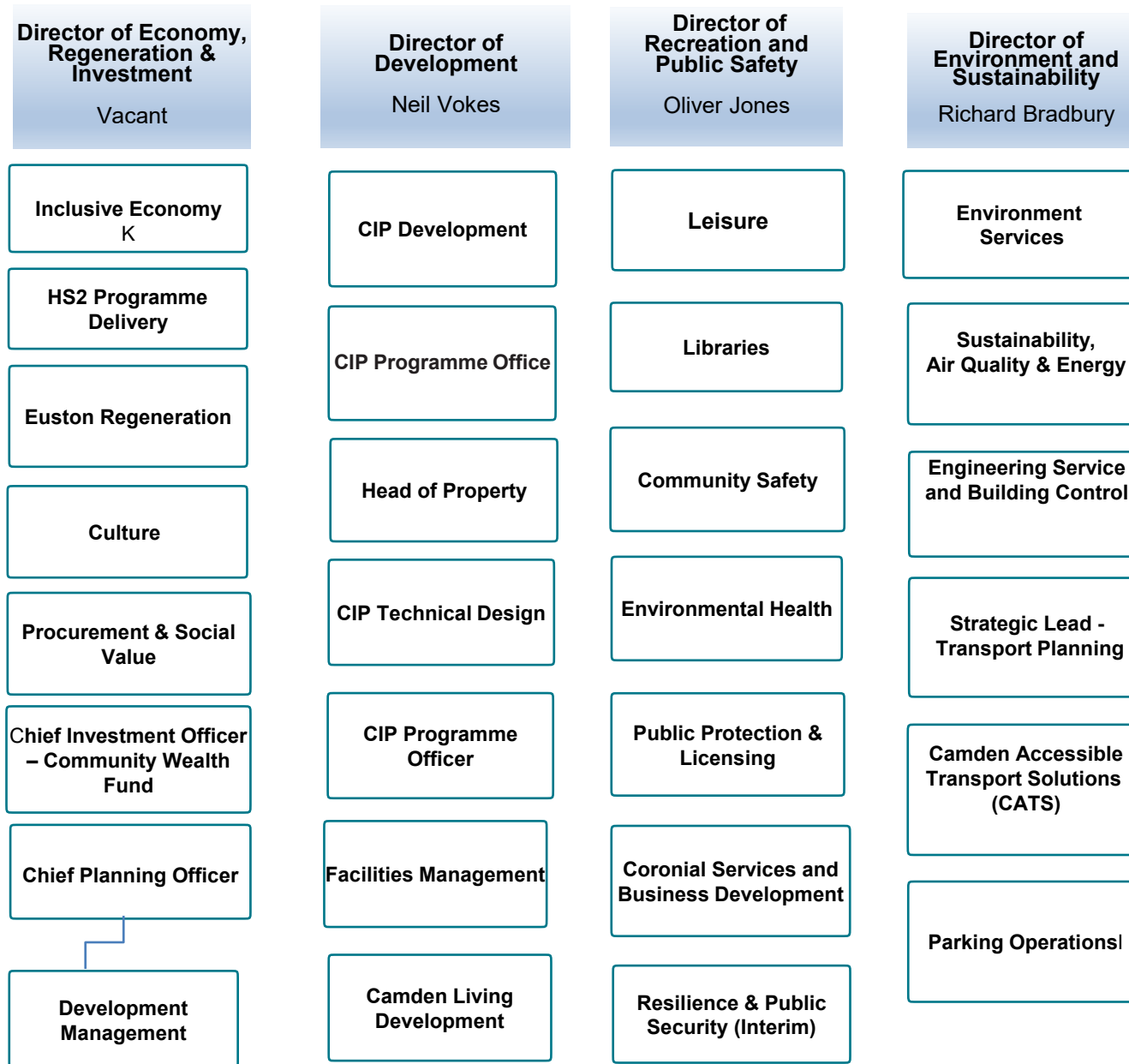
Health & Safety

Employee Relations

Resourcing

Executive Director Investment, Place and Opportunity

David Burns



Deputy Chief Executive
Executive Director Homes and Communities
Gillian Marston

**Director of Property
Management**
Gavin Haynes

Capital Works

Repairs & Operations

**Strategic Asset Management and
Compliance**

**Property Customer Services &
Engagement**

Safer Homes

Resident Safety Engagement

Chalcots

Director of Housing
Glendine Shepherd

**Leaseholder Services &
Housing Income**

Neighbourhoods (Housing)

Housing Solutions

**Allocations, Lettings & Private
Housing Services**

Executive Director, Adults and Health [statutory DASS]
Jess McGregor

**Director of ASC Operations
and Deputy DASS**
Avril Mayhew

**Head of Integrated Learning
Disability Service**

**Head of Integrated
Neighbourhoods**

Head of ASC Neighbourhoods

**Head of ASC Insight, Quality and
Financial Services**

Principal Social Worker

**Head of NHS Foundation Trust at
Camden**

**Service Manager, Approved
Mental Health Service**

**Director of ASC Strategy and
Commissioning and Deputy
DASS**
Chris Lehmann

Head of Adults Commissioning

**Head of Learning Disability
Autism and Mental Health**

**Head of Adult Social Care
Innovation**

Head of Provider Services

Director of Health & Wellbeing
Kirsten Watters

**Deputy Director of
Health & Wellbeing
Behavioural Insights &
Public Realm**

**Child Health Equity,
Strategy and
Partnerships
Consultant in Public
Health**

**Child Health Equity,
Strategy and
Partnerships
Consultant in Public
Health**

**Head of Early Years,
Schools and Families
Health**

**Head of Children's
Commissioning & Health
Partnerships**

**Deputy Director of
Health & Wellbeing
Healthy Lives**

**Head of Drugs, Alcohol
& Sexual Health**

**Health & Care,
Intelligence & Protection
Consultant in Health
Medicine**

**Head of Population
Intelligence & Statistical
Methods**

**Partnership Director
North London Councils**

**London ADASS
Programme Director**

**North London NHS
Foundation Trust**

Executive Director, Children and Learning [statutory DCS]
Tim Aldridge

**Director of Children's Prevention,
Safeguarding and Family Help**

Rashida Baig

Children in Need

Integrated
Youth Service

Early Years

Family Support & Complex Families
(interim)

Looked After Children and Care
Leavers

Children & Young People Disability
Service

**Director of Education
Commissioning and Inclusion**

Vikram Hansrani

Virtual School Head
(Interim)

Special Educational
and Inclusion
Intervention Service

Education, Commissioning &
School Organisation

Adult
Community Learning

Education Transformation
(Interim)

Director of Relational Practice

Nana Bonsu

Practice and Learning

Children and Learning
Transformation

London Resettlement Partnership &
LARP

Quality Assurance

Violence against Women and Girls

Systemic Lead

**Chief Executive
Camden Learning**
Stephen Hall

**Head of Business Development &
Communications**

Director of STEAM & Partnerships

**Senior Advisor Safeguarding &
Inclusion**

Director of Learning

**Head of Governor Services &
Company Secretary**

**Head of Finance & Business
Systems**