

CONSULTATION STATEMENT

The purpose of this statement is to demonstrate that there has been a proper Regulation 14 consultation about the draft Kilburn Neighbourhood Plan and that representations have been considered.

The statement consists of four parts describing the consultation process and the reactions that it elicited:

Part 1: details of **people and organisations** consulted about the proposed Neighbourhood Plan.

Part 2: details of **how they were consulted**.

Part 3: an **overview of the results** from the consultation survey

Part 4: descriptions of **how these issues and concerns were considered and addressed** in the proposed neighbourhood plan.

The 6-week statutory pre-submission consultation period (in accordance with Regulation 14 of The Neighbourhood Planning Regulations 2012) for the Neighbourhood Plan was launched on 1 October 2023. As the period included the run-up to the festive season it was extended to span the Christmas and New Year holiday periods and ended on 31 January 2024.

As well as the formal Regulation 14 consultation described in this statement, the Kilburn Neighbourhood Planning Forum has undertaken a number of other community engagement and consultation exercises since 2014. These are outlined at **Appendix 1**.

1. Details of people and organisations consulted about the proposed neighbourhood plan

1.1. Consultation Framework

In preparation for the statutory consultation period the committee drew up and approved a strategic plan to consult with people and organisations in the Neighbourhood and on its borders. A variety of consultation methods were utilised to make sure the consultation had the widest reach to people who live and work in Kilburn. This meant additionally targeting some groups who are harder to reach, encouraging them to have a say in commenting on the draft Plan.

1.2. Launch and ongoing announcements

The consultation was launched with a simple announcement on the website and a notice to members and supporters.

Emails and texts were sent to all 142 Forum members and the wider the mailing list announcing the consultation dates, as well as engaging them in the process and asking for volunteers to help at events, with leaflet distribution, stalls and spreading the word.

In addition, customised letters (**see Appendices 2, 3 and 4**) were emailed to three target groups:

- Community organisations
- Elected members
- Statutory consultees

The statutory consultees included Brent and Camden Councils. Their substantive joint response to the consultation is at **Appendix 5** whilst those of the other statutory consultees are at **Appendix 6**; see also section 4.1.

Tenants and Residents Association (TRAs) Chairs/Committees and Community Organisations were alerted to put the draft Kilburn Neighbourhood Plan consultation on their upcoming agendas, websites and in their newsletters, ensuring a KNPF member introduces the consultation and the ways to respond.

Announcements were made in public meetings such as One Kilburn, as well as on the Kilburn Neighbourhood Forum website and through social media.

Recipients were encouraged to forward the announcement and information to their own personal and professional local networks. Further reminders were circulated by email throughout the period, which was extended until after the holiday period.

The emails were supplemented with posts on social media – Facebook (114 followers), X (formerly Twitter - 850 followers) and Instagram (83 followers) and Next Door (700 but wider than the KN). Research into Kilburn hashtags conducted by a postgraduate UCL Planning student produced a list of 32 accounts of a variety of Kilburn businesses and other organisations (**see Appendix 7**) to share posts on the consultation, to spark interest and

debate, further promoting the consultation and signposting to the website and survey questionnaire.

The consultation was also announced on the increasingly popular WhatsApp groups including Kilburn Collaborators (One Kilburn network) and Kilburn Street Links. Brent's Kilburn and Queen's Park Wards now enjoy a network of street-specific WhatsApp groups for sharing information across the area. Each group has one representative on the Street Links central coordinating group.

In Kilburn (Brent) Ward, there are 24 groups – covering all but two streets in the KNPF area from Brondesbury Villas up to Dyne Road. Combined membership is approximately 1000 residents. Information about the Plan consultation was posted on Street Links on two separate occasions, for cascading down to the individual groups.

1.3. Partners and Events

The Kilburn Neighbourhood Forum committee worked closely with its allied organisations to promote the consultation as well as to share information, to encourage wider neighbourhood participation and to hold consultation events. A record of the collaborative planning meetings was kept and details were fed into the fortnightly KNPF committee meetings to share ideas and activities more widely. Major partners are:

1.3.1. One Kilburn

One Kilburn is a network of Kilburn community organisations, residents and local partners and stakeholders who have come together to focus vision and support on the whole of Kilburn. One Kilburn has grown out of people's serious concerns that the KNP Designated Neighbourhood did not include South Kilburn because South Kilburn already had its own Masterplan. While the KNP aims to deliver a shared vision and co-ordinated voice across the two Kilburn Wards (Kilburn, Brent and Kilburn, Camden) which are divided by the Kilburn High Road, South Kilburn residents, major users of the business and shopping facilities on the High Road, have been excluded. The network has emerged from the Forum's collaboration with Brent and Camden Councils and their officers working together to co-ordinate services, win funding and provide support for the network development.

Over the consultation period there were three One Kilburn network meetings engaging 35 – 50 people each time. Participants were very supportive of having a neighbourhood plan and enthusiastic about helping to widen the consultation engagement by passing on leaflets, sharing information and encouraging consultation feedback. The draft Plan and consultation questions were presented at two of the meetings as main agenda items which engendered a active range of interest, commitment and responses.

1.3.2. One Kilburn Activators

Three community 'activators' engaged on a temporary basis by One Kilburn spread the word and distributed leaflets and posters about the consultation across Kilburn. One focused on businesses, one on the north part of Kilburn and the third on the South Kilburn boundary.

1.3.3. Kilburn Town Centre manager

The Town Centre manager (Brent) works collaboratively with Camden planning officers to support and promote local Kilburn businesses. There are 400+ businesses, mainly small retail shops and services along the Kilburn High Road.

The Town Centre Manager introduced most of these businesses to the consultation within the high-quality cross- councils business newsletter (see fig. 1) he produces on behalf of Kilburn businesses in Brent and Camden. The newsletter items have been effectively raising awareness about the importance of Kilburn Neighbourhood to people who live and work there as well as preparing for the consultation itself.

1.3.4. The Kiln

The community team at the Kiln (theatre and cinema) were energetic in providing positive help with community and business engagement in line with their support in the early days of launching One Kilburn at the Kiln in January 2023. As well as sharing local information, the Kiln community and engagement team worked with the KNPF committee to co-design a Business Drop-In during the consultation. They provided the space, hospitality, and support for the Business Drop-In Event on 20 November.

1.3.5. Kilburn Library

The Library on the Camden side of Kilburn High Road is another major neighbourhood asset. It has recently won Arts Council funding for plans to re-design and refurbish the library and the library staff continue to encourage and support local Kilburn activities. The librarians were helpful in providing space for the publicity material and for responses to the survey as well as housing the Kilburn model, designed by the Middlesex students. Viewing the Kilburn Neighbourhood in three-dimensional physical form added value to the draft Plan and materials on display, attracting further interest and responses.

1.3.6. Kilburn Older Voices Exchange (KOVE)

KOVE is a well-established community organisation which has been running significant campaigns for many years and is well embedded in the Kilburn community, campaigning and achieving essential facilities including street benches and toilet access for Kilburn residents. The consultation materials were distributed at the events which KOVE held or supported, and the Forum gained from their considerable volunteer expertise.

1.3.7. University College London (UCL), Bartlett School of Building students

The UCL course leader is a strong supporter of the Kilburn Neighbourhood Plan. She has partnered with the KNPF generating projects and student research which raised awareness during the consultation period, specifically around reviewing the use of community space on Kilburn High Road. She lives in the neighbourhood and has enabled access to the consultation through resident and community activities.

1.3.8. Middlesex University students

The committee was keen to engage a cross-generational response to the draft Plan and fortunate to involve students studying Interior Design and Architecture at Middlesex University for a second year. Their projects involved designing a variety of activities to

engage high road users, enhancing their experience and promoting the diverse business offer.

KILBURN TOWN CENTRE NEWSLETTER

SUPPORTING OUR LOCAL BUSINESSES



November 2023

A KILBURN PARTNERSHIP – IT'S HAPPENING

It may have been a quiet year for newsletters, but it's been another busy year for Kilburn! In April, we moved on from our two-year pandemic recovery phase with a host of successful projects under our belt and more to come.

Alongside this, we're building the strategic blocks for our long-term future. On page two, we've set out our ideas for a local partnership and structure that can bring everyone to the table. There's a space for businesses to come together and focus on what's important to you. We'd love your feedback on this.

Meanwhile, we're sorry to report this is Gabi's last newsletter as she switches her attention to supporting Kentish Town. Gabi has been working tirelessly on a range of projects to grow and support One Kilburn as well as the Kilburn Up High mural project and we thank her for her dedication, hard work and support and wish her well. We'll introduce her replacement soon.

Finally, Richard would also like to thank you all for your kindness and support this year. Having to take time out due to cancer was never part of the plan, but he's got the all-clear and is pleased to be back to full health. He's really appreciated all your kind words and support throughout – it makes you guys a pleasure to work with!

Best wishes

Richard, Tom and Gabi

Richard: richard.hay1@brent.gov.uk
Town Centre Manager, Brent

Tom: tom.baines@camden.gov.uk
Area Regeneration Manager, Camden

Join us at the Kiln on Monday 20th November

Kilburn Neighbourhood Plan Forum invites you to join them at the Kiln Theatre on **Monday 20th November, 3-5.30pm**. It's a drop-in event, so come along anytime to 269 Kilburn High Road NW6 7JR.

They want to work with you to create a welcoming, safe, and thriving High Road and would love you to give your views on their draft Kilburn Neighbourhood Plan, which is currently out for public and business consultation.

You'll also be able to meet representatives from Brent and Camden councils, our local politicians, and police community safety teams. Free refreshments will be available.

Have your say on the Kilburn Neighbourhood Plan

The draft Kilburn Neighbourhood Plan is out for business consultation now! It is an important document that will set out community aspirations for Kilburn for the next 10 years and establish policies around future land uses and local development, giving you a stronger say in planning decisions.



The Neighbourhood Forum wants business views on the plan before it goes out to a public referendum next year to be formally adopted. **Scan the QR code** above or **click this link** to complete the survey.

For more details and to read the Neighbourhood Plan visit: <https://kilburnforum.london>

Fig. 1 – Kilburn Town Centre newsletter

1.3.9. Paprika Collective

Paprika Collective initiated a series of projects in 2023 starting with Take a Walk along the High Road, involving field and archival research as well as interviewing business owners and collecting stories. The Kilburn Neighbourhood consultation was promoted through these connections and encouraged cross-cultural and cross-generational perspectives.

1.3.10. Kilburn Lab Museum

Paprika Collective and the Middlesex Project leaders formed a partnership and won funding to develop the Kilburn Lab Museum. The partners worked in close collaboration with the KNF to develop and create the Kilburn Lab Museum working towards a popular and well - attended exhibition in the Tin Tabernacle which coincided with the end of the consultation period. This project has re-invigorated interest and engagement in Kilburn's culture and history and contributed significantly to promoting the KNP consultation.

1.3.11. Businesses and the Business Drop-in at the Kiln

Committee members have some well-established relationships with the local businesses, and these were re-visited during the consultation period to explain the consultation and ways to respond. Visits were divided amongst the committee members who covered the full extent of the High Road, speaking to business owners and employees, leaving leaflets with the link to the survey questions and/or noting comments at the time. At the same time members delivered the invitation to the Business Drop-In. This was met with enthusiasm by many business owners and employees but of course many were unable to leave their businesses for the meeting in the late afternoon (see fig. 2).

At the south end of the Kilburn High Road some of the businesses are networked which facilitated a partnership walkabout to share interest and the consultation survey.

London Graphics on the Kilburn Bridge printed the consultation publicity material. As the main print supplier for Kilburn High Road businesses London Graphics was able to spread the word about the consultation through all their contacts and channels.

The Business Drop-in at the Kiln was well attended (see fig. 3). The theme was Community Safety in Kilburn reflecting the concern about crime on and around the high road, including shop lifting, drug dealing, begging and homelessness. As well as several local businesses, the police and neighbourhood police panel members attended. The Camden deputy mayor spoke to open the event formally and there were further contributions from the GLA member for Brent and Harrow, the Brent lead member for Community Safety and Kilburn Brent and Kilburn Camden Neighbourhood Ward Panel chairs. Business views were graphically expressed by the London Graphics business owner. By the end of the event several people committed to responding to the consultation and to working together to improve community safety around the High Road.



Brent



Camden

Dear Kilburn Business Owners and Employees,

Kilburn Neighbourhood Plan Forum invites Kilburn's businesses to share their thoughts on the Kilburn Neighbourhood Plan, to meet representatives from Brent and Camden Council, local politicians and local community safety teams.

We are keen to engage with businesses on Kilburn High Road, to work together to create a welcoming, safe and thriving high street.

You are invited to drop in and share your thoughts on Monday 20 November, any time between 3-5:30pm at Kiln Theatre, 269 Kilburn High Road, NW6 7JR.

Speeches by stakeholders from 3:30pm.

Free refreshments will be provided.

Contact Us

Email -
stellataljaard@kilntheatre.com

3PM-5:30PM

20

NOVEMBER

KILN THEATRE

269 KILBURN HIGH ROAD,
NW6 7JR

**EVOLVE,
MODERNISE,
PROSPER:
KILBURN
BUSINESSES
HAVE YOUR
SAY!**

Fig. 2 – Flyer for Business Drop-in at The Kiln



Fig. 3 – Business Drop-in session at The Kiln

1.3.12. Stalls and walkabouts

Committee members and volunteers sponsored several stalls in the neighbourhood and distributed materials as well as engaging passers-by in discussion about local neighbourhood planning issues and helping them fill out the surveys. The stalls, held at different times and days, drummed up a lot of public interest and were the ideal way to obtain input from a broad mix of the local population. Many were in co-operation with planned community events taking place. These stalls and events are listed in Record of interventions table – see page 16 below.

1.3.13. Alan Hovell and Kilburn organised walks

Alan Hovell, Camden qualified tour guide, has been organising and leading guided walks in the neighbourhood area with a focus on the Greening of Kilburn and another on the music mile, the one-time cinemas and performance venues. He has helped to promote the consultation through the popularity of the Kilburn tours and his connections.

1.3.14. Schools and education centres

Committed to ensure that the consultation reached all age groups and elicited responses reflecting the diverse groups and cultures in the neighbourhood, the One Kilburn activators helped to engage responses from both the children and staff at Kilburn Grange School in the heart of the Kilburn High Road. This provided the opportunity to give the young people clear information about the Neighbourhood Plan's topics and proposals and for them to discuss

and feedback their views which are appended (**Appendix 8**) as well as included in the summary of responses.

Several nurseries, schools and family centres shared publicity material with the parents who were signposted to the survey and online consultation. The Institute of Contemporary Music students received flyers encouraging them to respond. In addition, the university students (UCL and Middlesex) contributed significantly to the consultation bringing a wider range of perspectives from their diverse cultural and generational experiences, as well as their enthusiasm, energy and planning subject discipline.

1.3.15. Pubs

Most of the 12 pubs in and around the Kilburn High Road were visited and leaflets left on the bars. Many of the publicans were enthusiastic about promoting the consultation and responding to the survey or giving on the spot feedback.

1.3.16. Places of Worship and Faith Groups

Places of worship and faith groups were alerted and those contacted were encouraged to participate in the consultation.

1.3.17. Kilburn Kitchen and homeless

Leaflets were given out to those attending the free meal stalls provided by Kilburn Kitchen on Friday evenings on Kilburn Square.

2. Further details of how people and organisations were consulted

In addition to written invitations, partnership working and events, there were a variety of further consultation methods and tools available for participants to review the draft Plan and submit their feedback.

2.1. Viewing the Plan

2.1.1. Draft Plan copies

These were available to view in:

- Kilburn Library (Camden), Kilburn High Road
- KHR Children's Centre, Palmerston Road
- Kilburn Library (Brent), Salusbury Road
- Kilburn State of Mind – Kilburn Grange Park Play Hut
- Community Association of West Hampstead
- Community Association Sidings Community lunch
- St Cuthberts
- KOVE Forum
- Charteris Sports Centre

2.1.2. Kilburn Neighbourhood model

This wood model representing a map of the High Road was designed and constructed by Middlesex Interior Design students. It was viewed in:

- Kilburn Library (Camden)
- KHR Children's Centre Palmerston Road
- The Tin Tabernacle

2.2. Consultation survey and questionnaire

For our 2023-2024 consultation of the Kilburn Neighbourhood Plan, we used a questionnaire template designed using Survey Monkey. The survey was first designed as a pilot version and completed by 20 activists. Following evaluation, the questions/text was revised to ensure the length and scope were suitable to capture a range of responses effectively.

2.2.1. The questionnaire

The questionnaire consisted of 13 questions plus a section for comments. The questions were designed to engage the participant in the plan itself and give their opinion as to their priorities for Kilburn. The questions were as follows:

- Q1. Do you live, work, shop or study in Kilburn?
- Q2. What is your home postcode?

- Q3. Which Borough do you live/work in?
- Q4. How old are you?
- Q5. Please describe your ethnicity
- Q6. What is your email address?
- Q7. Over the past 3 years, do you think Kilburn has become/is *[choose from one of the options: much better; better; about the same; worse; much worse]*
- Q8. Projects, ranked in order of preference *[rank the following 5 options: artworks on the High Road; improved cycling infrastructure and hangers/stands; providing more green space; public toilets; traffic calming]*
- Q9. How would you improve the pedestrian experience on Kilburn High Road *[rank the following 8 options: create 'rain gardens' on the High Road; improve street cleaning, waste and collection; increase pavements; improve street signage and information on local history; plant new trees on the High Road; provision of toilet facilities; reduce street furniture and signage; support new artwork along the High Road]*
- Q10. Which type of community facility does Kilburn need? *[rank the following 5 options: community centres; indoor sports facilities; live music venues; outdoor green spaces; outdoor sports facilities]*
- Q11. For large planning applications, what is the most important? *[rank the following 4 options: car club parking spaces; electric vehicle charging points; incorporate a car-free policy; secure cycle parking]*
- Q12. The Plan encourages active, safer, health neighbourhoods by... *[rank the following 6 options: increasing CCTV coverage on Kilburn High Road; increasing cleaning on Kilburn High Road; increasing litter bins on Kilburn High Road; increasing LTNs; monitoring sound to reduce vehicle noise; reducing crime, begging and rough sleeping]*
- Q13. The Plan has 4 key objectives, please rank *[rank the following 4 options: a characterful Kilburn; a coordinated Kilburn; a distinct Kilburn; a welcoming Kilburn]*

2.2.2. Distribution of the questionnaire

We sent out questionnaires to our membership list, to various local community groups including One Kilburn, residents' associations on both sides of the High Road, members of local clubs and street WhatsApp groups, as described in detail above.

We conducted face to face interviews by visiting local libraries, youth clubs, public events at the Kiln, had a stall at the Kilburn festival and directly canvassed local businesses on the High Road.

Paper copies of the questionnaires could be picked up in 10 locations around Kilburn – at the Kilburn Library on Kilburn High Road and the Kilburn Library on Salusbury Road as well as at the consultation events. Printed Plan documents were also made available to study at these locations.

An online version of the survey provided the opportunity for respondents to answer the questions in their own time. A QR code was featured on all communications and 76% of the responses came online.

During the consultation period the committee held fortnightly meetings to monitor and review the consultation reach and progress and to update and plan for further consultation events and activities.

2.2.3. Responses

We received 264 responses online and 84 paper responses, a grand total of 348. Chapter 3 of this report gives an overview of the responses, and **Appendix 9** sets out the detailed responses in a set of charts.

2.3. Publicity for the consultation

The consultation was promoted with a series of online and hard-format communications aligned with the strategy that the committee agreed was fitting for the local context.

2.3.1. Leaflets and posters

The consultation was more broadly publicised using leaflets, posters and banners. The leaflet and poster designs were developed in line with the KNF branding and revised for the consultation. One of the UCL students researched other neighbourhood consultation materials and co-designed the final version with Forum committee members. This built on the Forum's existing publicity to inspire people in Kilburn to respond to the consultation and to provide a clear message on how to do this.

The co-designed four-page leaflet includes the Forum's by-line 'Evolve, Modernise, Prosper' as well as the Neighbourhood map and Our Vision and Our Objectives which form the chapters in the Plan. Instructions on how to participate include a QR code linking to the KNPF website with access to the plan and questionnaire as well as information about future events, a signpost to the Brent and Camden Kilburn Libraries and a social media tag (see figs. 4, 5 and 6).

During the consultation period, the KNPF committee and volunteers distributed approximately 1,500 four-page leaflets promoting the survey. 500 A4 posters were distributed along with 75 larger ones.

These were handed out at consultation and engagement events, meetings and stocks provided at a range of popular local businesses as well as community spaces such as the local library and children's centre.

Posters were displayed on street community noticeboards – specifically on the Webheath housing estate and on the Brent Eleven Streets (BEST) community board.



Fig. 4 – Consultation leaflet front and back pages

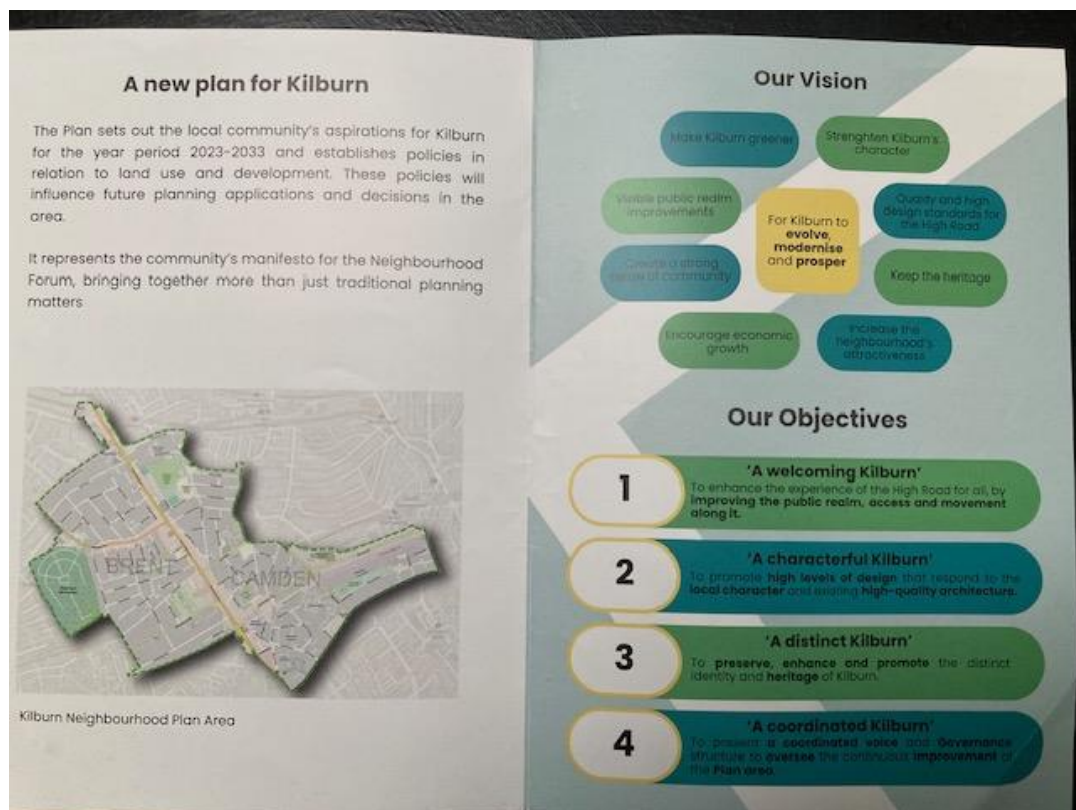


Fig. 5 – Consultation leaflet middle pages



Fig. 6 – A4 and A3 poster

2.3.2. Balloons, banners and t-shirts

The consultation was further promoted with a banner and 100 balloons (see figs. 7 and 8). White t-shirts printed with the KNPF logo were produced and provided to those who were running or participating in events, so that they were easy to identify for people could ask for help.

2.3.3. Broadcasting

The Kilburn local radio station run by K to K (Kilburn to Kensal), a longstanding local not-for-profit organisation now based at Metroland in Kilburn Square, broadcast information about the consultation, encouraging responses.

2.3.4. Kilburn High Road digital noticeboards

Kilburn High Road benefits from community event advertising on the two digital noticeboards on the west (Brent) side of the Kilburn High Road (see fig. 9). Access to this advertising emerged from the Forum work on a GLA/Spacehive project they bid for and won in the early days of the Forum. The poster was uploaded and displayed for 30 seconds every 5 minutes on the electronic noticeboard for a month during November and December and displayed to pedestrians, shop and business owners and their staff and well as bus passengers and passing traffic, widening its reach to high road users.

2.3.5. Social media

One of the UCL students carried out research into the current social media in the Kilburn neighbourhood. She launched a short campaign and shared the links with the committee members who were able to follow through with further messages.



Fig. 7 – Banners and balloons



Fig. 8 – Banner outside Charteris Sports Centre

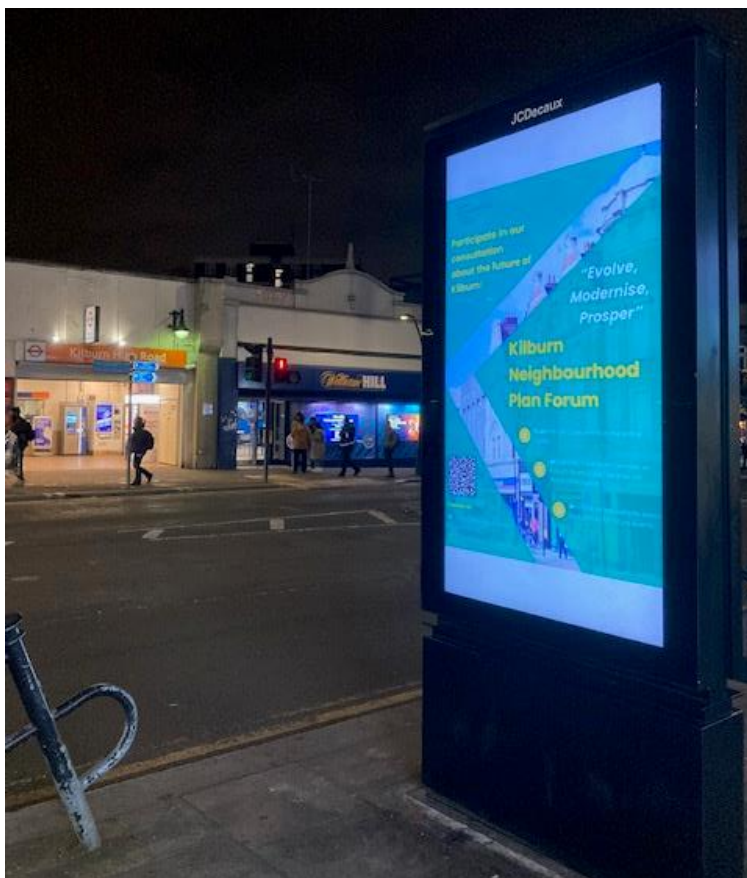


Fig. 9 – Digital noticeboard on Kilburn High Road

2.4. Events

To add to the publicity work and partnership support, the committee worked with the many neighbourhood community organisations contacted to plan for consultations and undertake face-to-face engagement through events, meetings and presentations. These are listed with details in the table below.

Record of interventions (in chronological order)

Date	Organisation	Event	Type of intervention	Materials available	Nos	Comments
6, 7, 14, 18 & 20/10/2023	KOVE	walks, lunch, activity groups	intro to consultation	general leaflet	72	raising KNPF profile
07/10/2023	Metroland	Kilburn river	leaflets	balloons, leaflets	20	young people
12/10/2023	Kilburn Older Voices Exchange KOVE	KOVE AGM	KNPF intro to group/enquiries	draft Plan, leaflets, balloons	15	awaiting consultation questions
17/10/2023	One Kilburn	planning meeting	intro, breakout groups, survey	banner, t-shirts, balloons	50	invited to present at Children's Centre
25/10/2023	Neighbourhood Police	Kilburn Ward Panel meeting	leaflets distributed	leaflets	30	well received
26/10/2023	Kilburn Library Camden KHR	survey	distribution QR, paper consultation	balloons, QR, paper consultation	30	leaflets in window / desk / Kilburn High Road model
31/10/2023	Kilburn Brent Library	set up consultation point	paper-based survey opportunities	leaflets, posters, survey, Plan	n/a	small table and box for completed forms
01/11/2023	Henna	Henna lunch group	consultation forms	banner, balloons, t-shirt, poster	7	great support from KOVE members
03/11/2023	Community Assoc West Hampstead	CAWH AGM	introduction	banner, poster, Plan, leaflet, survey	25	completed forms to CAWH admin
05/11/2023	South Kilburn Trust	induction for new trustees	brief intro to group	publicity display + survey	14	those living/working in Kilburn responded
07/11/2023	KOVE	KOVE Forum	Plan on agenda	table display, survey	17	8 survey forms completed, 2 previously
08/11/2023	Kilburn Businesses	Kilburn Christmas Market	one-to-one discussions	leaflets, survey	30	led by One Kilburn activator
09/11/2023	Friends of Paddington Old Cemetery	FoPOC	announced and online survey	leaflets, survey, posters displayed	15	explained cemetery in KNP, though in Queen's Park
10/11/2023	South Kilburn Trust	SK Community Working Party	Intro to group and follow-up after	display of publicity, survey	18	many partners living in KNP responded
10/11/2023	Kingsgate connecting people	drop-in	explanation of consultation	paper surveys, Plan, leaflets	10	paper surveys returned, sharing
11/11/2023	Charteris Sports Centre	exercisers	speaking to visitors	all publicity + survey	20	profile raising, survey for families
13/11/2023	Kilburn Park School governing board	governing board meeting	reference in meeting/follow-up	leaflets	70	70 parents sent link on WhatsApp
10, 13 & 14/11/2023	Kilburn Grange Children's Centre	baby play	leaflets, presentation	posters, leaflets, balloons, survey	30	30 completed paper survey, and shared
14/11/2023	KNPF committee	business drop-in planning	Invites to 400 businesses agreed	Community Safety people invited	20	plus deputy mayor, GLA member, police
14/11/2023	K to K Radio	broadcast	reference to consultation/website	radio introduction to KNP	35	raising KNPF profile and consulting

14/11/2023	One Kilburn	High Street Task Force	workshop, representing KNPF	leaflets, poster, Plan	20	draft Plan quality commended
16/11/2023	Kilburn State of Mind	play hut launch	display and direct approach	banner, Plan, posters, leaflets	50	spoke to Camden New Journal, police
17/11/2023	Kilburn Square market	meeting with manager	discussion re market plans	poster, leaflets for stall-holders	3	more Plan awareness in market
11/11/2023 & 18/11/2023	Labour Party Kilburn branch	Kilburn Square stall	speaking to passers by	all publicity +survey	100	30 leaflets taken; balloons giveaway
13/11/2023 to 18/11/2023	KNPF committee in 3 groups	business invites	delivering invites to 400 businesses	invite to business drop-in, publicity	250	Kodak Express Kilburn cluster helped; included side streets
18/11/2023	KOVE	toilet walk - access on KHR	balloon motif	top up library consultation papers	25	both sides KHR, Willesden Lane, Kiln
20/11/2023	KNPF and Kiln	business drop-in	discussion and speeches	Plan, leaflets, balloons, banner	35	Safer Neighbourhood chairs, GLA, business owners
21/11/2023	Kilburn Library Camden KHR	KNPF promotion	spoke to 20 library users/QR code	KHR model, publicity + survey	20	most interested / engaged / discussed
21/11/2023	Webheath TRA	December drive	personal approach	consultation papers	5	
23/11/2023	One Kilburn	network meeting	further reference to consultation	all publicity +survey	35	introducing new One Kilburn members
24/11/2023	KOVE	annual concert	display	all publicity +survey	36	paper surveys taken
25/11/2023	Kilburn Lab - Museum	launch	presentation	all publicity +survey	20	leaflets handed out
18/11/2023 to 18/12/2023	KNPF	digital noticeboard poster	street electronic noticeboard	30 secs every 5 mins exposure	100	KHR users alerted to QR code to survey

2.5. Assessing performance against the tasks and targets in the Consultation Plan

2.5.1. Added value

Consultation activities on the boundaries and borders helped spread the work and raise awareness about the draft plan and its priorities. This has generated a wider and larger network of people and organisations working together in Kilburn, including Westminster, Brent and Camden councils.

2.5.2. Volunteers

The consultation has benefited from support from an increasing numbers of volunteers.

2.5.3. Students and Young People

The Forum committee was keen to engage the younger generation. Responses from children at Kilburn Grange School which is located next to Kilburn High Road are a focussed reflection of young people's views and therefore included at **Appendix 8**. Although there is no secondary school in the area the music students were consulted at Institute of Contemporary Music. Children and parents were consulted at the Camden Family Centre.

2.5.4. University students and new partnerships

As an outcome of working with students on university planning and design courses, new collaborations have been forged linking academic studies to practical community research,

projects and dialogues. These partnerships will contribute to the delivery of priorities in the Plan in the future.

2.5.5. Cultural links, language and accessibility

Consultation activities focused on events which are ongoing within community and business organisations. The Middlesex Design students designed a project which focused on cultural diversity, language and access to engagement around the many ideas and activities in the neighbourhood.

2.5.6. Disability

The consultation aimed to include those who have mobility and other physical impairment to reach people on their own territory as much as possible.

2.5.7. Mental health/isolated/homeless

The consultation planning stage, it was agreed to reach people on the street and those who may be homeless. Leaflets were given out at the Friday night food bank on Kilburn High Road and people in the long queue asked questions and gave their views on a one-to-one basis.

2.5.8. Online and face-to-face

The consultation was designed to reach people through face to face, networking and digital channels to include everyone who lives, works or studies in the neighbourhood.

3. Overview of the consultation survey results

As indicated above, we received 264 responses online and 84 paper responses, a grand total of 348. Charts summarising responses to the above, except for questions 2, 5 and 6, can be found at **Appendix 9**.

3.1. Key messages from survey results

In addition to the survey data, 67 respondents also made specific comments. Over 80% of the comments received mentioned one or more of the three topics below:

- 34 said 'reduce crime of the High Road'
- 20 said 'make the High Road cleaner'
- 13 said 'introduce traffic calming measures on the High Road'

From our analysis of the results, there were four stand out 'wishes' expressed:

1. for a greener Kilburn
2. for a cleaner Kilburn
3. for a more pedestrian friendly Kilburn
4. for a Safer Kilburn

3.2. How the plan reflects the survey responses

Our plan supports the four above wishes in the following ways.

3.2.1. Greener, cleaner Kilburn

Our vision is for a greener, cleaner Kilburn through a programme of street greening instigated along the High Road and extending into green corridors along side streets which will create an appealing environment for people to walk, cycle, and spend time in and help link the High Road with surrounding communities, public transport hubs and routes, and green assets, including Grange Park, and Paddington Old Cemetery.

3.2.2. 'Project boxes'

Our plan contains a number of "project boxes" which are focused on cleaning, greening, traffic calming and public safety.

- Project Box A ('A welcoming Kilburn') includes:
 - Coordinated and ongoing street maintenance, waste collection, and street cleaning.
 - New street tree-planting along the High Road.
 - Noise reduction by traffic.

- Decluttering of the High Road.
- Project Box B ('A welcoming Kilburn'): the Forum is keen to work with partners, to deliver a connected green corridor between Kilburn and West Hampstead in the North, and Kilburn & South Hampstead in the South, cleaning up existing spaces and establishing a new linear park to include new tree-planting, play spaces, micro-parks, and street furniture.
- Project Box D ('A characterful Kilburn') includes:
 - Additional resources will be sought to ensure more frequent cleaning on both sides of the High Road.
 - Promotion of various traffic calming schemes.
 - Reductions in street crime, begging, and rough sleeping could be achieved by coordinated prioritisation of policing and social work resources.

4. Descriptions of how these issues and concerns were considered and addressed in the proposed neighbourhood plan

4.1. Summary of comments

In the description of the consultation process we list the 45 local organisations, the 17 statutory bodies and the 10 elected representatives who were formally consulted. The responses were disappointingly low, though we understand this is not uncommon.

We received a number of informal comments of support from various members and supporters of the Forum who are themselves very active members of various local organisations. This was again a welcome comment of support.

The most significant comments came from the few Statutory Bodies who responded. These were Brent and Camden Councils (joint response at **Appendix 5**), as well as Historic England, Natural England, Transport for London and Westminster City Council, whose responses are at **Appendix 6**. We were very grateful to receive these and welcome the comments made.

In general the comments were supportive and in some cases provided some additional information, but did not change the proposals contained within the Plan. The joint response from Camden and Brent Councils was far more detailed and it was discussed by the Forum Committee. The concerns of the Committee are shown in the annotated version of the joint comments at **Appendix 5**. A few issues remained unclear and further clarification was asked for. Following this 'discussion' the appropriate changes were made to the Plan.

4.2. Wider initiatives

There was general support that the plan promotes various wider initiatives such as those promoted by Brent and Camden Councils who are applying for funding for works along Kilburn High Road, including works to increase the width of the pavements. We particularly support the creation of a 'pocket park' at the High Road end of Priory Park Road.

There was also support for the GLA's London Plan in respect of its Good Growth strategy which aims to create a more socially inclusive city that improves the health and well-being of all residents and its (GLA) Healthy Streets approach to make streets more attractive places. The aim of Healthy Streets is for cleaner air, streets that are easy to cross, are places where people feel safe and where they can stop and rest.

4.3. Changes to the Neighbourhood Plan

The main changes made, with reference to specific parts of the Neighbourhood Plan are listed below. (please note that corrections to spelling, grammar and number references omitted from this list).

1. Maps – figures 1 and 3 were considered to be misaligned
2. (3.16) Update reference to crowd funding initiatives

3. (Section 5) Consider revising structure of Section 5
4. (Fig 3) Interventions at Kilburn High Road Station not clear
5. (5.14) Further details on mobility hubs
6. (5.18) Clarify local flood risk zones
7. (Fig 6) Revise map – flood risk
8. (5.29) Further details on 'gateways' to Kilburn
9. (Policy Box WK1) suggested changes from Brent & Camden, TfL and Historic England - not all compatible with each other
10. (Policy Box WK2) location of mobility hubs
11. (6.2) insert "massing, rhythm and materiality"
12. Design Code map needs key and figure reference (7?)
13. Re-design and edit design code diagrams and label (Fig 8?)
14. (Policy Box CK1) suggested additions and changes from Brent & Camden, TfL and Historic England - not all compatible with each other
15. (Policy CK2) Suggested to move comment on BS7913 to Project Box C
16. (6.29) include reference to "Mayor of London's Violence Against Women and Girls Strategy"
17. (Project Box D) Amend reference to 'Low traffic neighbourhoods' (LTNs) no longer used
18. (Policy box CK4) move reference to Design review to project box
19. (Policy Box DK1) various and conflicting changes and additions
20. (Figure 9) Revise key to include Willesden Lane and Belsize Road and amend pub names
21. (DK3) re-word with reference to 'kiosks'
22. (Appendix 2 & Fig 10) Check and make compatible listed buildings list

APPENDIX 1

Previous community engagement and consultation exercises

Introduction

The Kilburn Neighbourhood Plan Forum, and its predecessor in the form of 'the steering group' has been considering neighbourhood planning for 10 years. During that time there have been many calls on the Forum by the communities of Kilburn to act on matters of considerable significance to Kilburn; influencing but not directly contributing to a written plan.

This summary looks at the work of the Kilburn Neighbourhood Forum Committee and its predecessor the Steering Group up to the time of the Regulation 14 consultation. The history of the organisation focuses on the key decisions and events, particularly those involving other organisations and earlier consultation processes.

A timeline of key meetings, events and publications is provided in table format to support this summary – see **Appendix 9**.

2014 – 2016

In this time period the idea of a neighbourhood plan began to be considered by several community activists. This moved into the establishment of a steering group (SG) to lead on the formation of a Forum, discussions on the appropriate boundaries of a 'Kilburn Neighbourhood'; agreeing a constitution for the Forum itself; and finally the application for the area and forum to be designated. Many of those involved had been keen to improve their neighbourhood and to join up with others, including those from across the Kilburn High Road and the municipal divide.

The application for designation of the Forum noted the involvement of the following organisations during the preparatory period:

- Abbey Housing Coop
- BEST (Brent Eleven Streets)
- BRAT (Brondesbury Residents and Tenants)
- Webheath TRA
- Alexandra & Ainsworth TRA
- Kilburn Square Housing Co-op
- South Kilburn Trust
- Abbey Community Centre
- Kingsgate Community Centre
- Charteris Sports Centre
- South Hampstead and Kilburn Partnership
- Kingsgate Workshops Trust and Gallery
- Friends of Kilburn Grange
- West Hampstead Women's Centre

Transition Town Kensal to Kilburn

There was also a membership / contact list of about 80 names by the end of 2014

From the very beginning those involved saw the purpose of a neighbourhood forum as a body to represent the whole of Kilburn. Existing organisations (and individuals) were forced to think of themselves as being in Brent or Camden, rather than in Kilburn. Early discussions focused on an organisation for a united Kilburn that would consistently argue that both Councils should work together for the benefit of Kilburn.

In January 2015, the Forum established its first website.

In addition to the emphasis on a united Kilburn, the importance of Kilburn High Road was equally seen as being the main focus of the Forum and the plan. Many organisations came and went as the steering group organised a range of different sorts of meetings beginning with a launch meeting on 15 July 2014. The Steering Group found itself being presented with many issues that existing groups were finding difficult to resolve. The Steering Group did not have the capacity to help develop various community initiatives but was able to embrace these issues in its plan making. However for the second half of 2014 the SG had to focus on the definition of the Area and the structure of the Forum. So there were extended discussions about the area the SG proposed for designation. Though much of the focus of the proposed initiatives was targeted on the High Road it was recognised that the Forum needed a resident base. The proposal to use the two Kilburn electoral Wards as a starting point was accepted. This was followed by a long period of consultation with various parties. There were high and low points. It was recognised that a part of Kilburn High Road was in the City of Westminster, but this could not be included because a Neighbourhood Area had already been designated. At the other end of the High Road where it leaves the Kilburn Ward the retail frontage was available as an existing Forum in Camden had excluded the High Road from its Area. The biggest loss was the whole area of South Kilburn which was covered by a Masterplan and Supplementary Planning Document and Brent Council insisted it could not be included.

The application for designation of the Area states 40 000 copies of a map and leaflet were distributed as part of the consultation on designation of the Neighbourhood Forum and Area in early 2015. It further states:

"Nearly 200 people completed the survey, entitled 'Do you want to help plan the future of Kilburn?' Over 95% lived and/or worked in the area. 75% of those completing the survey agree the map represents Kilburn – there were a number who could not understand why South Kilburn is not to be included. 94% agree that we should concentrate on the Kilburn High Road as the major planning and development challenge and opportunity. 93 % wanted to hear more about the Kilburn Forum."

On 23 March 2015, the first Neighbourhood Forum meeting was held with an attendance of 17 people. It adopted a formal constitution, prepared for a membership campaign and established a timeline for future work.

There was a high level of activity throughout 2015 as the documents to apply for designation were prepared. An inaugural AGM of the Neighbourhood Plan Forum was held on 8th July 2015 and application for designation was made in October 2015. The Kilburn Neighbourhood Forum and the Neighbourhood Area were designated in June 2016 by both

Brent and Camden Councils This was seen as a major achievement by all those involved, though the work of writing the plan was only just about to begin.

The work initiated at this time and followed through for the next two years was to support gathering evidence from as many sources as possible. The focus shifted from collecting the views of local residents and existing organisations to collecting data and developing vision documents to help with the scope and depth of the draft Neighbourhood Plan.

2017 – 2019

The period of collecting information on which to base the Forum's proposals covered a period from the mid 2016 to mid-2019. The forum was fortunate in having offers of various kinds made so that very little of the research had to be paid for directly. The following reports informed the work of the Forum.

- June 2016 Kilburn Neighbourhood Plan research by [We Made That](#).
- October 2016 Presentation by Dr M. Reza Shirazi, currently a Senior Research Fellow at the School of the Built Environment, Oxford Brookes University on social sustainability.
- June 2017 Kilburn Socio-Economic profile by AECOM for Locality with very detailed statistics approximating to the neighbourhood area from 2011 Census.
- May 2017 Four surveys of Kilburn – Anglia Ruskin University students – four different aspects of Kilburn by four groups of students, but with a strong emphasis on the Brent part of Kilburn.
- March 2018 Analysis of sources on current conditions of Kilburn with sources of data appendix by Udenson Caldbeck and InformAll (Ositia Udenson and Stéphane Goldstein).
- January 2019 Kilburn High Road Neighbourhood Planning Design Support - AECOM technical support via Locality
- August 2019 Kilburn Neighbourhood Plan Visioning document – AECOM 'Masterplan' support via Locality

In April 2018, a re-constructed website was launched – kilburnforum.london.

During this period, the Forum Committee was informing itself of the detailed nature of the plan area and of the scope for policies required for preservation and development. The ideals and aspirations of many local residents and organisations were fed into the Forum Committee by regular membership / public meetings.

This enabled the Forum Officers to slowly evolve a comprehensive vision and set of objectives upon which a draft plan could be produced. Various projects and developments continued to occur in the area, and many of the Forum's committee members and supporters were involved in these via other organisations. However, it remained important for the Officers of the Forum to keep a focus on writing the Plan, rather than being distracted by more immediate activities and campaigns.

During the latter part of 2019 (and in fact the first couple of months of 2020) the Committee became completely focused on identifying the main objectives of the plan and devising a strategy for writing the plan. A considerable amount of time was spent on identifying the headings under which the plan could be structured. It should be stressed that there were no professional planners involved in the Forum committee and there was some tension in connecting the ambitions of the Committee members with the legal imperatives of local government planning policy. However, various draft versions of 'Visions and Objectives' were produced.

During 2019 the Committee also began to investigate the possibility of raising some independent financial support.

2020 – 2022

2020 began with great enthusiasm and ambition. The Forum held a very successful AGM in February with strong support from two Kilburn Councillors, one from Brent and one from Camden; the Camden Councillor at that time being the Mayor of Camden. A series of discussions took place in break out groups which were set the following task:

"The main work of the Forum now is to write the Neighbourhood Plan. To involve the members and supporters we are asking you to engage directly with considering some major aspects of the plan by considering priorities for three major areas: Business, Community and Environment. A recent report prepared for KNPF by AECOM is available for reference."

In March 2020, the first Covid lock-down regulations were introduced and the KNPF management committee was faced with disaster.

The ambitions of the Committee had to be adapted because of these new circumstances. The notes of the meeting held on 26 March 2020 stated:

"There was a general discussion about the current situation and agreement that we should continue as well as we can to keep the Forum going though we could not achieve what we had originally planned to do yet.

There were different concerns expressed which included

- a) the continuing issues of certain specific areas (such as Netherwood street)
- b) agreeing an approach on writing the plan, based on what we have done so far but making it 'tighter' and more focused
- c) ensuring the web site is updated and maintained..."

The Committee agreed this period of time of restricted activity could be used to continue to look at other Neighbourhood Plans.

There was general agreement that the Committee should continue with meeting like this but should aim to have shorter but more frequent meetings as one of the main purposes is to maintain a commitment to the Forum during this difficult time.

The first stay at home lockdown was announced on 23 March and became legally enforceable on 26 March.

The work of the Forum continued with online meetings (mainly using Zoom) until mid-2022.

At first it seemed that the biggest achievement would be to keep the Forum alive through online meetings. For most of 2020 the Committee met regularly and gave a lot of time to various planning proposals, particularly those for refurbishment of the retail units in Kilburn Square. The Forum developed a good relationship with the developers at first and this took up the time of many of the committee members. The other main task the Committee took on was to research the objectives and progress of other Neighbourhood Forums, making contact with some of them. This enabled committee members to share ideas of good practice from other NPFs and to increase networking.

The early months of 2021 partly focused on organising a Zoom AGM with Lead Members from both Councils and key Council Officers. This was held on 17 March 2021. In the first half of 2021 the Committee continued to focus a lot of attention on developments in Kilburn Square, connecting with a residents' steering group and widening the contacts with residents in the neighbourhood area. Whilst the proposals for the retail development seemed to be running out of steam Brent Council produced some major housing proposals which local residents resisted vociferously. Whilst trying to take a balanced view the Forum was dismayed that the various proposals for Kilburn Square were all treated separately. There was no place for an over-all vision for this deeply significant part of Kilburn High Road which is a site allocation in the Brent Local Plan.

In the middle of 2021 the Forum Committee became aware that the period of designation ended on 3 June. The Committee had misunderstood that renewal of the designated status was more than a simple formal application to the Councils. During the latter part of 2021, the Officers of the Forum prepared the appropriate evidence for re-designation. The 'Forum' continued to operate in the same way. The formal consultation on re-designation was carried out by Brent and Camden Councils during November and December.

Towards the end of 2021 considerable progress was made towards the primary purpose of writing the Neighbourhood Plan. In October 2021, the Forum was awarded a Locality grant towards the cost of appointing a consultant to produce the first draft version of the plan. A consultant was appointed on 1 November and the Committee worked with the consultant including a Kilburn High Road walkabout on 23 November. The first outline draft was made available to the Forum Committee in December.

At the same time the Committee engaged with various other local activities which included discussing proposals with the Principal Planner (High Streets) in Camden, discussions with TfL about the arches by Kilburn Underground station, attending a Spacehive workshop and consulting with tenants' and residents' groups about housing development proposals from Brent Council on the Kilburn Square Estate. The Committee also began to work with the staff and students of UCL Bartlett School of Planning on their Kilburn focused projects.

Brent and Camden Councils conducted a formal consultation at the end of 2021 as part of the re-designation process and so 2022 began well with the re-designation being formally completed on 7 February. The work with the UCL students was a very positive experience during the winter months, including some very informative walkabouts on and near the Kilburn High Road with the students.

However the main activity in the first part of 2022 was in working on the draft plan with the consultant. This took the Committee quite a lot of time as it aimed to involve as many people as possible. By May, the UCL students had produced impressive posters to summarise and promote their ideas and recommendations for Kilburn High Road and the surrounding

area as part of their degree projects and the Committee used these for a wider publicity campaign, such as at the summer Kilburn Festival in Grange Park. Also in May the KNPF committee began discussions with Camden and Brent officers about a Kilburn 'Community Improvement District'.

On 13 June 2022, the Forum received the joint comments on the draft Neighbourhood Plan from Brent and Camden Council officers. There was some disappointment as there were quite a lot of significant issues for the Committee to deal with. There was also not enough money to continue to pay for the consultant so the Committee took on the task of revising the Plan themselves. Though not anticipated at the time this took six months!

There was very intensive work during the later part of 2022 to make the changes, corrections and improvements in the Plan. At the same time other members of the Committee began to plan for the period of consultation required under Regulation 14.

In November 2022, a membership meeting was held in person – though provision was made for a contribution by Zoom. There was good attendance from interested Council officers and activists but disappointingly few members and supporters. A presentation was made summarising the previous work of the Forum; the slides from the presentation are posted on the KNPF website at <https://kilburnforum.london/members-open-meeting-presentation-david-kaye/>.

At the end of the year the emergence of the One Kilburn network (under the Community Improvement District initiative) was providing an opportunity for much wider contact with organisations and activists in Kilburn. The development proposals for 'Kilburn Square' continued to be monitored. The revised draft plan was submitted to Brent and Camden Councils on 30 November 2022.

2023

The Committee began 2023 with much optimism and the assumption that the Neighbourhood Plan would be 'official' by the end of the year. During the first few months of 2023 the focus of the Forum was in three main directions. One was resolving some further issues with the content of the draft plan. The Forum had received a further set of comments from Brent and Camden officers on 25 January and the officers of the Forum were seeking to resolve these. The Committee also began to actively plan its consultation strategy, forming working groups to focus on different aspects of the plan proposals which would be of interest to different 'target' groups. Thirdly there was increasing involvement in working with many other projects and organisations in Kilburn through the growth and influence of One Kilburn. This was launched on 23 January when the Forum participated in a major local event held in conjunction with the Kiln Theatre (who provided the venue), One Kilburn and the interior design department of Middlesex University.

The Committee held the Forum's AGM on 14 March which continued to focus on working with others in Kilburn. A note about the AGM stated:

"The speakers provided diverse and inspiring talks and presentations which contributed to a renewed energy at the AGM. New partnerships are being formed and themes being presented creatively which generated some lively discussion. The

greening theme was particularly popular as well as public art and traffic calming. An additional green space was identified.”

For technical reasons, the resolution of some issues with the draft plan took longer than expected. At the same time, a full strategy for a major public consultation was being prepared and connections with the One Kilburn network continued to be strengthened. There were further unexpected delays in the processing of the draft plan. The further revised version was completed at the end of May and submitted to the Councils. The Forum was then informed that the Strategic Environment Assessment (SEA) would be completed including a six week consultation process. The Committee minutes noted that many of the Forum’s supporters could not understand the reasons for such long delays and were impatient to be working directly on projects and events.

The Committee was much relieved to be informed on 13 September 2023 that the Regulation 14 consultation could begin.

Timeline

A timeline of key meetings, events and publications over the entire period 2014-2023 is set out at **Appendix 10**.

APPENDIX 2

Consultation letter sent to local organisations

We are writing to ***** about the **Kilburn Neighbourhood Plan**. This plan has been developed by the Kilburn Neighbourhood Plan Forum (KNPF).

We are inviting you to give comments formally on the plan, as part of our statutory consultation.

The Plan outlines the collective vision and goals of the local community for Kilburn over the next decade, from 2023 to 2033. It establishes specific policies regarding land use and development that align with the community's aspirations. These policies will have a significant impact on shaping future planning applications and decisions within the area.

The draft plan is available to view online using this link <https://kilburnforum.london> where you will also be able to find other information about KNPF.

This consultation aims to ensure that KNPF's ambitions and objectives are well understood and shared by all the communities in Kilburn. Please send your organisation's comments directly to consult@kilburnforum.london.

Individually you, your committee members and users can complete a survey form via the KNPF website <https://www.surveymonkey.co.uk/r/XYZP8NY> or on paper (see attached) and return to a Kilburn library.

If you would like to speak to a member of the Forum committee please contact us directly on committee@kilburnforum.london.

We seek input and feedback from all those with an interest in Kilburn and would therefore welcome your help. Please publicise as widely as possible. Please note that paper copies of the plan and the survey form are available at Kilburn (Camden) Library (Kilburn High Road NW6 5UH) and Kilburn (Brent) Library (Salisbury Road NW6 6NN).

We look forward to hearing from you by the end of January, if possible.

Best wishes

Ajay Kumble and David Kaye

Co-chairs KNPF

List of the 45 recipients

Tenants and residents' associations (TRAs)

Alexander & Ainsworth TRA

BRAT – Brondesbury Residents and Tenants

BEST – Brent Eleven Streets

Kilburn Village Association

Mortimer Crescent TRA

Webheath TRA

Education, arts and leisure

Abacus Ark Nursery
Bannatyne Health Club Maida Vale
Busy Bees Nursery
Charteris Sports Centre
Chaston Nursery School
Cycletastic
Friends of Kilburn Grange Park
Institute of Contemporary Music Performance (ICMP)
Kilburn Grange Family Centre
Kilburn Grange School
Kilburn Library (Brent)
Kilburn Library (Camden)
Kiln Cinema and Theatre (formerly Tricycle)
Kingsgate Garden Club
Kingsgate Primary School
Kingsgate Workshops Trust
Learning Tree Nursery
St Mary's Kilburn CE Primary School

Places of worship and faith groups

Islamic Centre of England
Kilburn Evangelical Free Church
Ruach City Church at Gaumont State
Sacred Heart Church

Community and health centres

Abbey Community Centre
Centro Infantil Menchu (Menchu Nursery)
Conway House
Kilburn Grange Children's Centre
Kilburn Square Co-op Community Hall
Kilburn State Of Mind (KSOM) at Kilburn Grange Play Hut
Latin American House
Mazenod Social Club & Community Centre
Mortimer Hall
Netherwood Youth and Family Hub
South Hampstead and Kilburn Community Partnership (SHAK)
West Hampstead Women's Centre

Others

Advice For Renters
Kilburn Older People Exchange (KOVE)
Kingsgate Neighbourhood Watch
One Kilburn
Tin Tabernacle

APPENDIX 3

Consultation letter sent to elected members

Dear MP / Cllr / GLA member,

We thank you for your support as our elected representatives on behalf of the Forum Committee and invite you to participate in the consultation of our draft plan. For the last two months input and feedback has been collected from members of the communities in Kilburn regarding the plan, which is now prepared for formal submission.

The Plan outlines the collective vision and goals of the local community for Kilburn over the next decade, from 2023 to 2033. It establishes specific policies regarding land use and development that align with the community's aspirations. These policies will have a significant impact on shaping future planning applications and decisions within the area. You can access the plan in full through the following link: <https://kilburnforum.london>.

This consultation is a statutory requirement which must be completed as part of the process of adopting a neighbourhood plan. We hope you will show your support for Kilburn by participating in this current consultation process. Please send your comments directly to consult@kilburnforum.london.

For your information, the on-line survey is available here <https://www.surveymonkey.co.uk/r/XYZP8NY> and paper copies of the plan and the survey form are available at Kilburn (Camden) Library (Kilburn High Road NW6 5UH) and Kilburn (Brent) Library (Salisbury Road NW6 6NN).

If possible please reply by the end of January and no later than the end of February.

We look forward to hearing from you

Best wishes

Ajay Kumble and David Kaye

Co-chairs KNPF

List of recipients

Brent Councillors (Kilburn Brent ward)

Cllr Rita Begum
Cllr Rita Conneely
Cllr Anthony Molloy

Camden Councillors (Kilburn Camden ward)

Cllr Eddie Hanson
Cllr Lloyd Hatton
Cllr Nanouche Umeadi

GLA Members

Ann Clark AM (Barnet and Camden)
Krupesh Hirani AM (Brent and Harrow)

MPs

Karen Buck MP (Westminster North)

Tulip Siddiq MP (Hampstead and Kilburn)

APPENDIX 4

Consultation letter sent to statutory consultees

We are writing to you as a consultation body about the **Kilburn Neighbourhood Plan**. This plan has been developed by the Kilburn Neighbourhood Plan Forum (KNPF) which was designated in 2016 and re-designated in January 2022 by the London Boroughs of Brent and Camden.

The draft plan outlines the collective vision and goals of the local community for Kilburn over the next decade, from 2023 to 2033 and is available online using this link <https://kilburnforum.london> where you will also be able to find other information about KNPF.

The draft plan establishes specific policies regarding land use and development that align with the community's aspirations. These policies will have a significant impact on shaping future planning applications and decisions within the area.

Please send your comments directly to consult@kilburnforum.london.

The current consultation process aims to ensure that the plan's ambitions and objectives are well understood and shared by all the communities in Kilburn. Information about this can be found at [Consultation is go | Kilburn Neighbourhood Plan Forum \(kilburnforum.london\)](#).

In addition paper copies of the plan and the survey form are available at Kilburn (Camden) Library (Kilburn High Road, NW6 5UH) and Kilburn (Brent) Library (Salisbury Road, NW6 6NN).

We look forward to hearing from you by the end of January 2024.

Best wishes

Ajay Kumble and David Kaye

Co-chairs KNPF

List of recipients

The above letter was sent as an email on 11 December 2023 to the statutory consultees listed below, with a request to respond by the end of January 2024. Copies of the emails are available on request.

British Gas
Cadent (gas network)
Camden Clinical Commissioning Group
Environment Agency
Historic England
Homes England
Internet Services Providers' Association – ISPA UK
London Borough of Brent
London Borough of Camden
Mayor of London

Metropolitan Police
Mobile Operators Association
Natural England
Network Rail
Thames Water
Transport for London
UK Power Networks

Detailed comments were received from the London Boroughs of Brent and Camden – see their joint response at **Appendix 5**. Of the other statutory consultees, four also provided comments: Historic England, Natural England, Transport for London and Westminster City Council – see **Appendix 6**.

APPENDIX 5

Combined comments from Brent and Camden Councils

Overall the draft KNP is a well-structured document. It clearly sets out how the policies in the Plan derive from strategic policies, local priorities and wider research. It also helpfully differentiates between 'policies' which will be tested against the basic conditions, and 'projects' which will not.

Detailed comments are set out below.

Para/Figure	Joint comments from Brent and Camden	KNPF reactions to comments from the Councils
3.6	For reference - Brent Council is also considering a possible extension to Kilburn and North Kilburn Conservation Areas. See Brent Historic Environment Place-making Strategy - suggestedareasforextensionstonorthkilburnconservationarea.pdf (brent.gov.uk) . This will be subject to public consultation in due course. Reference could be made to the Camden and Brent Local Plan Policies Map for up to date locations and boundaries of designated and non-designated heritage assets.	There is a general issue about 'updating' reference to changing documents. At some point this has to stop with what we know at the time. A link can be changed easily.
3.7	Correction: The NPPF has recently been updated so the reference should be amended to (2023).	OK.
3.12	Updated information: Brent's Local Plan was adopted in 2022. Camden are consulting on a draft Local Plan (2023).	Change dates.
3.13	Correction: include reference to Appendix 1 for the Strategic Policies.	OK.
3.16	Updated Information: Wider initiatives could be updated. For information: Camden's Evening and Night Time Strategy due to be considered by to Cabinet in Feb 2024.	Consider what to update.
Section 5	General for Clarity- the structure of this and the following sections could be improved to include the Objective followed by the Policy then relevant supporting text, which expands on the policy, and then text relating to the projects.	NB This has been a comment since the first draft of the Plan. I do not think we need to do this, particularly as it means a complete re-write of half the plan. We need to clarify if this is now an instruction!
5.14	Clarity – have preferred locations been identified for mobility hubs?	Mobility Hubs are supported in a general way, when appropriate. We do not have locations identified. This seems a completely rational position to take and I do not understand why it is a problem.
5.18	Clarity: Reference could be included to Local Flood Risk Zones in Kingsgate Road and Goldhurst Road and the need for Sustainable Urban Design systems (Suds) here.	A useful piece of information, but what does 'reference to' mean? Since our plan sits below the Borough Plans we could keep referencing everything in those plans. What are the criteria for a particular reference?

Figure 6	Clarity: Camden have received an updated Flood Risk Assessment as part of the evidence base for the Local Plan. This shows the latest information and it would be beneficial for this Map to show the Local Flood Risk Zones and the previously flooded streets in the ward. We can assist with providing this information.	We can update the map with additional information.
5.29	Clarity - would be helpful to provide a definitive list of gateways here to make clear how policy WK1 should be interpreted.	We have given stations as examples – the whole point is an enabling policy that supports identifying 'Gateways' but does not want to impose restrictions for the future. Seek guidance on how to express this. (I think it says it already).
WK1b)	Clarity – The reference to Fig 1 does not assist in providing clarity to this policy requirement. is it an error?	Should be Fig 3.
Design Code	Clarity –The Plan showing the Design Code Area should be referenced. i.e. Figure X. and referenced on the code itself. The figure must include a key, so that it is clear where the code applies, including the Site Allocation for Kilburn Square (where you have indicated it does not apply)	This is complicated. <ul style="list-style-type: none"> - In policy box CK1 item b) does contain a statement excluding 'Kilburn Square site allocation'. I don't understand why. So this can be removed if there is no 'planning' reason for it! - There is a map for 'Design Code' frontage on page 20 but it has no Figure number – should be '7' we think. - We have a problem with the Design Code page (p 21) as it is very difficult to edit, Will try to revise in line with this comment.
Point 2 Height	This promotes setbacks as a solution. While this can work in some situations it can result in a poorly designed 'boxes on roof' solution rather than a carefully designed piece of architecture.	This is complicated. We have had considerable discussion about all of these diagrams. I disagree with this comment; we are not promoting this as we say ' may be acceptable '. In other statements use of 'may be' has been accepted as providing for the option in appropriate situations. It is certainly better than additional floors without set back. There are some very good examples on the High Road – such as Morans.
Point 4 Mix	Minor - The Brent Local Plan identifies an existing cluster of creative industries in Kilburn and unmet demand for incubator, accelerator and co-working space. As set out above the Brent Local Plan supports the establishment of Creative Clusters at Kilburn, through protecting existing employment uses and seeking to secure new workspace. Ground floors could also support workspace. Whilst this could fall under the general term 'commercial', we would encourage the NP to be more explicit on and supportive of workspace. Given the priority for different ground floor uses in different frontages/ streets, maybe reference to policies DK1, DK2 and DK4 for the appropriate uses depending on location could be made.	This is complicated Again problem with editing. Useful advice given here; but need further discussion on what to include whereas this is not an amendment to 'Point 4 Mix'
Point 4 Mix	New residential units on the High Road need to take account of the very poor air quality (NO2 in particular)	Noted. As above.
Point 5 flexibility	Roof space 'should' not 'must' be accessible to occupiers of the upper floors, as the impact on adjacent neighbours' amenity needs to be carefully considered.	Need further advice / discussion on this. Edit problem.
Point 6 Edge	General - could also usefully address relationship with outdoor seating/sale of goods.	Need further advice / discussion on this. Edit problem.

Point 7 frontages	Potential concerns over the management of air quality impacts if there are residential amenity spaces fronting the High Road.	Point 7 Frontages does not refer to residential use so this concern may usefully be inserted elsewhere.
CK1b	Clarity – the Design Code itself and Map showing the area should be given a reference, i.e. Figure X, and clearly referred to in this policy.	Agree – Design Code page (21) needs Figure number (again edit problem possibly). As noted above the map should be Fig 7.
CK2	Clarity – BS 7913 would generally be considered by the contractor undertaking the works rather than the applicant. Note - BS 7913 is not readily available. Many applications for changes to shopfronts come from small businesses, so should tailor the KNP to this audience. We suggest that this section is removed. It can be referred to in the Project box rather than the policy. Reference to the project box should be removed from the policy.	We have discussed this at length and made agreed changes previously. Need explanation why a regulation should not be referred to in policy. We have included reference to professional help. Agree final point – remove reference to policy box (though don't know why).
6.30	Reference to LTNs should be removed as the Government has indicated it will not fund such schemes, so we will no longer be using the terminology. This paragraph could be replaced with: "Schemes to improve the local movement network to better reflect the ambitions above, and reduce unnecessary vehicle movements, based on TfL's Healthy Streets methodology to create Healthy Neighbourhoods, will be taken forward where there is local support and as funding becomes available.	Noted – surprised we have not heard more about this (maybe that is just us). Can use the suggested text. Assume reference to historic schemes can still refer to LTNs as that is what they were at the time?
CK4	Clarity: Both Councils encourage the use of design panels for significant <u>major or smaller</u> schemes, those of public interest and in sensitive areas however we (or Camden) would suggest that <u>this</u> is not a policy matter appropriate for a Neighbourhood Plan. Policies should set out how a decision maker should react to a development proposal, rather than the procedures to be followed, particularly as this could also have significant staffing and cost implications for Councils. This policy should therefore be removed or reverted to a Project as in previous drafts.	Needs discussion – certainly not removing all reference to these – very interesting to discover they exist though information about them is hard to come by. The comments made here need careful consideration. Why not appropriate for Neighbourhood plan?
7.3 – 7.8	Information: Camden have published an updated Retail and High Street Needs Assessment 2024 as part of the Local Plan evidence. This can be viewed here and can be used to update this section.	Again updating. Useful signposting – need to agree if we need to provide more than the link. The link is to a lot of lengthy information – e.g. Camden Retail and Leisure Study Vol. A – 72 pages – see para 2.58 – Kilburn not included. 7.5 refers to Brent study (2018).
DK1	Clarity – change of uses to offices and other employment uses from other Class E uses does not require planning permission unless limitation to a specific use only is set out in any condition attached to a planning permission, so the policy is not able to influence the mix within existing Class E premises where no such conditions apply. The Plan should explain this in the supporting text in order to manage expectations.	Good advice – will include as appropriate.
DK1 First para	Clarity: Policy is called High Road Land Uses but refers to defined retail frontage along other roads, these are not shown on figure 9. Need to include on key for clarity.	Helpful – can change the title to include main side roads.

DK1 4 th para	Correction – refers to ‘entertainment cluster’ identified on Figure 6 instead of 9	Agree – change.
DK1 Bottom section	Reference to proposals for mixed use development on the High Road, Willesden Lane and Belsize Lane needs to be related to identified areas as otherwise would apply to whole of these roads. Refers to defined retail frontage but not shown on figure 9.	Agree – revise.
Figure 9	Clarity –A key is required to identify the proposed entertainment clusters.	Need clarification on what is meant by a key here. The map shows all the buildings numbered and named. Do we need to shade areas and give names?
Figure 9	There is an additional, smaller entertainment cluster at the southern end of the High Road between Brondesbury Villas and the southern tip of Camden's boundary (also incorporating Westminster's western stretch of the High Road from Oxford Road to Kilburn Park Road). This cluster is less important than the northern sector, but still needs to be taken into consideration within the night time context.	This is useful – can be inserted in 7.12, 7.13, 7.14. Also note 7.12. refers to Fig 5 – should be Fig 9.
DK3	Clarity - There are also a number of fixed kiosks along the High Road. Is the intention this policy to encourage more kiosks? Does this not conflict with potential street clutter? Should the criteria apply to permanent market stalls or kiosks?	Good point. We think we need to discuss what we want here. Do we have a policy on fixed kiosks? We have tended to oppose ‘street clutter’ but perhaps some kiosks and stalls can be considered amenities. What does ‘permanent’ mean in this context? This is a specific policy box!
DK4	Support the policy to ensure social and community uses are protected.	Good Is paragraph 7.28 still correct? Are paragraphs in section 8 on CIL still correct (David's comments) DK4 is a specific Policy Box on “Social and Community facilities”. With the development of One Kilburn since this was written perhaps we should consider some changes? This is also relevant to parts of Section 8.
Appendix 1	Reference should be made to Camden consulting on Draft new Local Plan in early 2024. The policies in the Plan have limited weight at this time, depending on timings of the submission version of this plan, this may change and Camden will keep you up to date on this issue.	Good point. Again an update as time passes.
Appendix 2	Correction - Also Goetze Grace Grade II GOETZE GRAVE IN PADDINGTON CEMETERY, Non Civil Parish - 1389534 Historic England The list of listed buildings is incorrect. 1-8 Langtry Walk, 2- 62 Alexandra Place, 49-59 Loudoun Road_ Grade II (is grade II*).	It is not clear what correction is required There is some confusion as the numbering of the same buildings is different in the list on page 42 and on the map (Fig 10) – perhaps we should use the same numbering for both!

APPENDIX 6

Comments from other statutory consultees

Below are the comments from the four statutory consultees who responded, other than Brent and Camden Councils. They are from Historic England, Natural England, Transport for London and Westminster City Council.

1. Historic England

Thank you for inviting Historic England to comment on the Regulation 14 version of the draft Kilburn Neighbourhood Plan. As the Government's adviser on the historic environment, Historic England is keen to ensure that the protection of the historic environment is fully taken into account at all stages and levels of the local planning process. Having reviewed the draft Plan we can offer the following advice.

The area encompassed by the Plan is large and complex and incorporates significant designated and undesignated heritage assets, alongside a Grade II Registered Park and Garden, 8 conservation areas, open recreation space, numerous community assets and a busy local town centre. The Plan area is spread over both Camden and Brent and the Forum is to be applauded for reaching the key milestone of Regular 14 consultation.

There is much to support in this exceptionally clear and concise neighbourhood plan and we are pleased to note the strong emphasis on preserving and enhancing the identity and historic character of the area. In our view, the policies and guidance will help to enhance the historic environment and improve its attractiveness and sustainability. As such, the draft Plan does not raise any issues of concern for Historic England and therefore we do not feel it necessary to comment in detail. We can however offer the following minor observations.

Policy WK1 High Road Public Realm

You may wish to emphasise the provision of new public realm to seek opportunities to reflect local historic character through the choice of materials or design of street furniture etc. These aspirations are partially covered in 5.23 to 5.33 but could be strengthened by inclusion as Policy. Historic England produces advice in respect of public realm in the historic environment which you may find helpful. This advice promotes the use of high-quality sustainable materials and provides examples of how public realm interventions can enhance the historic character of historic areas. <https://historicengland.org.uk/images-books/publications/streets-for-all/heag149-sfa-national/>

We note that WK1 b. refers to Figure 1, should this be Figure 3 (Areas for intervention)?

Policy CK1: Design Principles

The Forum may wish to consider requiring submission of a heritage/character design statement which demonstrates how any new development responds to the prevailing local character and will contribute positively to preserving or enhancing the positive aspects of this. This can ensure that developers have demonstrably taken this into account when developing designs.

We note the Kilburn High Road Code deals primarily with the spacing of new development but does not appear to address existing adjacent development (although this is briefly mentioned in 6. Edge). You may therefore wish to strengthen this by stating where new buildings are required to respond to the adjacent historic pattern of development special attention should be given to the prevailing scale, massing, rhythm and materiality. Where appropriate new development should seek opportunities reinstate active street frontages and reinstate/reflect important architectural details.

Policy CK 2

We note the reference to BS7913. However, it may be beneficial to emphasise the detailed guidance in both Camden and Brent's Shopfront SPD's (Brent's SPD3 is notably detailed and well-illustrated) and to embed following this advice in policy, in addition to "Projects" where it is currently addressed.

Policy DK1. Requirement c. encourages windows and balconies. In many instances the provision of balconies is desirable however it may be sensible to modify this with "wherever appropriate and where this is consistent with requirement b." New development infilling between historic shopping parades which often directly address the street with no setback may be visually compromised by seeking to include balconies. Therefore, there is potential for conflict between b. and c.

In respect of policy STJ7 Public Realm, we would recommend that the reference to "repair or replacement of listed or other local authentic original street furniture" be amended to "repair or reinstatement". We assume that policy intention is to secure the reinstatement where original items have been lost rather than to replace existing street furniture with new (unless their condition is such that this is unavoidable and subject to the relevant consents).

For more information on incorporating historic environment considerations into a neighbourhood plan, you may also wish to refer to our published advice available here:

<https://historicengland.org.uk/advice/planning/plan-making/improve-your-neighbourhood/>.

To avoid any doubt, this letter does not reflect our obligation to provide further advice on or, potentially, object to specific proposals which may subsequently arise as a result of the proposed plan, where we consider these would have an adverse effect on the historic environment.

Please do contact me, either via email or the number above, if you have any queries.

Yours sincerely

Richard Parish
Historic Places Adviser
London and the South East Region

2. Natural England

Thank you for your consultation on the above dated 11 December 2023.

Natural England is a non-departmental public body. Our statutory purpose is to ensure that the natural environment is conserved, enhanced, and managed for the benefit of present and future generations, thereby contributing to sustainable development.

Natural England is a statutory consultee in neighbourhood planning and must be consulted on draft neighbourhood development plans by the Parish/Town Councils or Neighbourhood Forums where they consider our interests would be affected by the proposals made.

Natural England does not have any specific comments on this draft neighbourhood plan.

However, we refer you to the attached annex which covers the issues and opportunities that should be considered when preparing a Neighbourhood Plan and to the following information.

Natural England does not hold information on the location of significant populations of protected species, so is unable to advise whether this plan is likely to affect protected species to such an extent as to require a Strategic Environmental Assessment. Further information on protected species and development is included in [Natural England's Standing Advice on protected species](#).

Furthermore, Natural England does not routinely maintain locally specific data on all environmental assets. The plan may have environmental impacts on priority species and/or habitats, local wildlife sites, soils and best and most versatile agricultural land, or on local landscape character that may be sufficient to warrant a Strategic Environmental Assessment. Information on ancient woodland, ancient and veteran trees is set out in Natural England/Forestry Commission [standing advice](#).

We therefore recommend that advice is sought from your ecological, landscape and soils advisers, local record centre, recording society or wildlife body on the local soils, best and most versatile agricultural land, landscape, geodiversity and biodiversity receptors that may be affected by the plan before determining whether a Strategic Environmental Assessment is necessary.

Natural England reserves the right to provide further advice on the environmental assessment of the plan. This includes any third party appeal against any screening decision you may make. If a Strategic Environmental Assessment is required, Natural England must be consulted at the scoping and environmental report stages.

For any further consultations on your plan, please contact:
consultations@naturalengland.org.uk.

Yours sincerely

Sally Wintle
Consultations Team

Annex 1 - Neighbourhood planning and the natural environment: information, issues and opportunities

Natural environment information sources

The [Magic](#) website will provide you with much of the nationally held natural environment data for your plan area. The most relevant layers for you to consider are: **Agricultural Land Classification, Ancient Woodland, Areas of Outstanding Natural Beauty, Local Nature Reserves, National Parks (England), National Trails, Priority Habitat Inventory, public rights of way (on the Ordnance Survey base map) and Sites of Special Scientific Interest (including their impact risk zones)**. Local environmental record centres may hold a range of additional information on the natural environment. A list of local record centres is available from the [Association of Local Environmental Records Centres](#).

Priority habitats are those habitats of particular importance for nature conservation, and the list of them can be found [here](#). Most of these will be mapped either as **Sites of Special Scientific Interest**, on the Magic website or as **Local Wildlife Sites**. Your local planning authority should be able to supply you with the locations of Local Wildlife Sites.

National Character Areas (NCAs) divide England into 159 distinct natural areas. Each character area is defined by a unique combination of landscape, biodiversity, geodiversity and cultural and economic activity. NCA profiles contain descriptions of the area and statements of environmental opportunity, which may be useful to inform proposals in your plan. NCA information can be found [here](#).

There may also be a local **landscape character assessment** covering your area. This is a tool to help understand the character and local distinctiveness of the landscape and identify the features that give it a sense of place. It can help to inform, plan and manage change in the area. Your local planning authority should be able to help you access these if you can't find them online.

If your neighbourhood planning area is within or adjacent to a **National Park** or **Area of Outstanding Natural Beauty** (AONB), the relevant National Park/AONB Management Plan for the area will set out useful information about the protected landscape. You can access the plans on from the relevant National Park Authority or Area of Outstanding Natural Beauty website.

General mapped information on **soil types** and **Agricultural Land Classification** is available (under 'landscape') on the [Magic](#) website and also from the [LandIS](#) website, which contains more information about obtaining soil data.

Natural environment issues to consider

The [National Planning Policy Framework](#) sets out national planning policy on protecting and enhancing the natural environment. [Planning Practice Guidance](#) sets out supporting guidance.

Your local planning authority should be able to provide you with further advice on the potential impacts of your plan or order on the natural environment and the need for any environmental assessments.

Landscape

Your plans or orders may present opportunities to protect and enhance locally valued landscapes. You may want to consider identifying distinctive local landscape features or characteristics such as ponds, woodland or dry stone walls and think about how any new development proposals can respect and enhance local landscape character and distinctiveness.

If you are proposing development within or close to a protected landscape (National Park or Area of Outstanding Natural Beauty) or other sensitive location, we recommend that you carry out a landscape assessment of the proposal. Landscape assessments can help you to choose the most appropriate sites for development and help to avoid or minimise impacts of development on the landscape through careful siting, design and landscaping.

Wildlife habitats

Some proposals can have adverse impacts on designated wildlife sites or other priority habitats (listed [here](#)), such as Sites of Special Scientific Interest or [Ancient woodland](#). If there are likely to be any adverse impacts you'll need to think about how such impacts can be avoided, mitigated or, as a last resort, compensated for.

Priority and protected species

You'll also want to consider whether any proposals might affect priority species (listed [here](#)) or protected species. To help you do this, Natural England has produced advice [here](#) to help understand the impact of particular developments on protected species.

Best and Most Versatile Agricultural Land

Soil is a finite resource that fulfils many important functions and services for society. It is a growing medium for food, timber and other crops, a store for carbon and water, a reservoir of biodiversity and a buffer against pollution. If you are proposing development, you should seek to use areas of poorer quality agricultural land in preference to that of a higher quality in line with National Planning Policy Framework para 112. For more information, see [Guide to assessing development proposals on agricultural land](#).

Improving your natural environment

Your plan or order can offer exciting opportunities to enhance your local environment and should provide net gains for biodiversity in line with the [National Planning Policy Framework](#). If you are setting out policies on new development or proposing sites for development, you should follow the biodiversity mitigation hierarchy and seek to ensure impacts on habitats are avoided or minimised before considering opportunities for biodiversity enhancement. You may wish to consider identifying what environmental features you want to be retained or enhanced or new features you would like to see created as part of any new development and how these could contribute to biodiversity net gain and wider environmental goals.

Opportunities for environmental enhancement might include:

- Restoring a neglected hedgerow.
- Creating a new pond as an attractive feature on the site.
- Planting trees characteristic to the local area to make a positive contribution to the local landscape.

- Using native plants in landscaping schemes for better nectar and seed sources for bees and birds.
- Incorporating swift boxes or bat boxes into the design of new buildings.
- Think about how lighting can be best managed to reduce impacts on wildlife.
- Adding a green roof to new buildings.
- Providing a new footpath through the new development to link into existing rights of way.

[Defra's Biodiversity Metric](#) should be used to understand the baseline biodiversity value of proposed development sites and may be used to calculate biodiversity losses and gains where detailed site development proposals are known. For small development sites the [Small Sites Metric](#) may be used. This is a simplified version of [Defra's Biodiversity Metric](#) and is designed for use where certain criteria are met.

Where on site measures for biodiversity net gain are not possible, you should consider off site measures.

You may also want to consider enhancing your local area in other ways, for example by:

- Setting out in your plan how you would like to implement elements of a wider Green Infrastructure Strategy (if one exists) in your community.
- Assessing needs for accessible greenspace and setting out proposals to address any deficiencies or enhance provision. Natural England's [Green Infrastructure Framework](#) sets out further information on green infrastructure standards and principles.
- Identifying green areas of particular importance for special protection through Local Green Space designation (see [Planning Practice Guidance](#)).
- Managing existing (and new) public spaces to be more wildlife friendly (e.g. by sowing wild flower strips in less used parts of parks or on verges, changing hedge cutting timings and frequency).
- Planting additional street trees.
- Identifying any improvements to the existing public right of way network, e.g. cutting back hedges, improving the surface, clearing litter or installing kissing gates) or extending the network to create missing links.
- Restoring neglected environmental features (e.g. coppicing a prominent hedge that is in poor condition, or clearing away an eyesore).

Natural England's [Environmental Benefits from Nature tool](#) may be used to identify opportunities to enhance wider benefits from nature and to avoid and minimise any negative impacts. It is designed to work alongside [Defra's Biodiversity Metric](#) and is available as a beta test version.

3. Transport for London

Thank you for consulting Transport for London (TfL). We have reviewed the draft Neighbourhood Plan and have the following comments and feedback:

Figure 1 and Figure 3 – Areas for Intervention

These maps appear to be misaligned with the background map which is potentially confusing. In figure 3 we note the potential wayfinding improvement opportunities at Kilburn station but it is not clear what is proposed for Kilburn High Road station.

Policy WK1 – High Road Public Realm

In part c it may be helpful to widen the scope of initiatives so that it reads '*Support the revitalisation of unused or left-over spaces, though the installation of artwork or lighting, **other design or management measures** or through uses that front onto and activate these spaces*'.

Policy WK2 – Mobility Hubs

Although we support the principle of mobility hubs, they should ideally be limited to active travel modes and caution should be taken when combining this with the provision of EV charging points and car club vehicles. They could attract additional traffic into unsuitable locations and may detract from conditions for people who are walking, wheeling or cycling. We support the intention to provide mobility hubs in the carriageway, replacing car parking spaces or helping to reduce road widths.

Project Box A – Public Realm Initiatives

We welcome part B '*Rebalancing of road space, the use and design of lay-bys and waiting areas to support pedestrian priority, including the introduction of parklets and mobility hubs*'.

In part I it would not be feasible to include information on local history and things to do on Legible London signage because sign products and mapping information are all designed to be consistent for users. Local assets and points of interest are included wherever relevant in terms of pedestrian wayfinding, but we are unable to include any additional information or details about the local area. We are considering the possibility of people being able to access additional information from some Legible London signs in the future, however, this is still at a very early stage and there are no timescales for any signage variants to be introduced but, if they are, it may be an option that could be considered in the future.

Policy CK1 – Design Principles

Reference could be made in this policy or the supporting text to the Mayor of London's Good Growth by Design Guidance

CK1 – Part 2 Safer places through design

We welcome principles that consider the safety for all users of the public realm (including perceptions of safety) during both the day and night time. The Mayor of London's Violence Against Women and Girls Strategy should be taken into account when thinking about designing safer places for all.

Policy CK3 – Streets for People

Support could be provided through this policy for widespread adoption of the Healthy Streets Approach throughout the neighbourhood area. We would welcome specific support for the Kilburn High Road Healthy Streets Scheme.

We welcome a car free policy for new developments.

The section on cycle parking could reference London Plan minimum standards for cycle parking and confirm that they should be met or exceeded, and that the design of cycle parking should follow London Cycling Design Standards (LCDS) including provision for adapted cycles and cargo bikes.

Project Box D: Active, healthy, clean and safer neighbourhoods

This could provide explicit support for adoption of the Healthy Streets Approach and selective vehicle access restrictions as discussed in paragraph 6.30.

We hope that these comments are helpful and can be included in an updated version of the Neighbourhood Plan

Best wishes

Richard Carr
Principal Planner – Spatial Planning
TfL Planning, Transport for London

4. Westminster City Council

Thank you for the opportunity to review the draft Kilburn Neighbourhood Plan (the Plan).

Overall, the Plan's vision to make Kilburn a distinctive, vibrant, and thriving place to be is supported. The Plan generally aligns with many of the policies the council has written in the City Plan and policies written by Queen's Park Neighbourhood Community Council in their Neighbourhood Plan – the area for which is adjacent to the Kilburn Neighbourhood Area. The council also supports the forum's mission to encourage Brent, Camden, and Westminster to work collaboratively and see Kilburn as 'one place'.

Objectives

In general, Westminster is supportive of the Objectives 1 to 4. We agree with the goals to enhance public realm in Kilburn and provide a better experience for those living and visiting the area, such as providing more street furniture, improving public toilet provision and enhancing gateways/wayfinding opportunities. We are also supportive of Kilburn becoming an entertainment hub, offering a full range of community facilities whilst also enhancing and preserving its heritage assets and local historical character.

The main policies and projects where we have comments on are listed below:

Project Box B: Green Corridor

We strongly support a connected green corridor between Kilburn and West Hampstead in the North, and Kilburn and South Hampstead in the South and would welcome exploring whether this could be extended to connect to Paddington Recreational Ground, especially if

the corridor develops to the Southeast of High Road. This will further support the development of a green infrastructure network in this area of London.

Policy DK1: High Road land uses

The council supports the diversification of Kilburn High Road's retail offer and agrees with the road becoming an attractive entertainment destination, which would benefit Westminster's residents in neighbouring areas. The Plan identifies quite a few entertainment clusters that sit along the borough border of Maida Vale (Figure 9. 13 to 17). These clusters will support new culture/entertainment uses and the night-time economy (drinking establishments, cinemas, live music venues etc.). Although this will provide benefits for Westminster's residents, this benefit must be balanced with any potential harm to residential amenity. The policy should make clear that for any entertainment uses that requires planning permission, they should also ensure they are designed not to negatively impact neighbouring residential streets. For example, through management plans, and schemes should be designed carefully to avoid noise and odour conflicts between uses – and to avoid harm to residential areas and nearby conservation areas.

Project Box D: Active, healthy, clean and safer neighbourhoods

The council commends the plan's objectives to increase safety and air quality in and around Kilburn. Car free days/street closures which may affect Westminster's highway's network should be coordinated with Westminster's Highways Team to ensure there is no negative impact on Westminster's road network from car free interventions.

Policy DK3: Markets and outdoor stalls

We support the plan's objective to make efficient use of under-utilised space along the High Road. However, within this policy it should be made clear that provision of new permanent markets, street stalls and kiosks should also not cause noise or disturbance to the detriment of local residential amenity. Especially, since there is favour for a Kilburn night market and night-time street entertainment. This is to ensure any markets which activate under-utilised spaces near the borough border do not harm residential areas within Westminster.

Project Box G: Standing Committee

The council commends the plans aspiration to unify the Brent and Camden sides of Kilburn. We recommend that when the agenda for standing committee meetings includes matters near to the border, Westminster council is notified for comment. This will support delivering a collaborative cross-borough approach to planning in the Neighbourhood area.

Errors/inconsistencies

- Incorrect map reference for the proposals for leisure and entertainment uses, including theatres, drinking establishments, cinemas, live music venues, concert and dance halls etc – it references Figure 6 of the Neighbourhood Plan, but this figure is map on flood risk areas.
- Incorrect map reference where the Neighbourhood Plan identifies an area along the High Street where new culture and entertainment uses will be supported – it references Figure 5, but this is a map on Green Corridors.
- Kilburn High Road Design Code has no figure no. Page 20.

- Figure 9 Entertainment clusters could do with a key to explain what red and green mean.
- Full stop after provided should be removed - policy box DK4, paragraph 2, page 37.
- Shopfronts on page 25 should be capitalised to confirm with the rest of the document.
- Policy Box F: Gallery space - the question mark in the last sentence be removed.

Your sincerely,

Westminster City Council
Planning Policy

APPENDIX 7

Social media accounts in Kilburn

Account	Type of business or organisation	Followers
@afckilburn	football club	209
@anytime_fitness_kilburn	fitness account	698
@blacklionkilburn	pub	708
@cosmosrfcladies	sports team	1,251
@crossfitevolvingkilburn	gym	1,108
@fireaway.kilburn	pizza place	301
@frankies_bar_kilburn	restaurant	351
@kilburnarms	bar/pub	1,021
@kilburncomedyclub	comedy club	451
@kilburncommunitygarden	community garden	219
@kilburncosmosrfc	sports team	764
@kilburnfc	football club	159
@kilburngaels	hurling Club	684
@kilburnic	Islamic centre/community organisation	31.4k
@kilburnlibraryofthings	local service	338
@kilburnmyroad	London artist	1,136
@kilburnschool	school	1,043
@kilburnstateofmind	community account	391
@kilburnstaterecords	record label	360
@kilburnstreetkitchen	community group	227
@kilburntattoo	tattoo artist	11.4k
@kilntheatre	theatre	15k
@kodakexpresskilburn	camera/photo	421
@lashedbykc	lash studio	4,598
@lifeinkilburn	community account	971
@mykilburbhighroad	snapshots of Kilburn High Road	585
@okclubkilburn	sport club	357
@rainbowfabricskilburn	shopping and retail	19.1k
@spacesofkilburn	snapshots of Kilburn	356
@stlukes.kilburn	church	121
@thebrondesage	bar	7,410
@thenailbox_kilburn	nail salon	1,353

APPENDIX 8

Sample of responses from children at Kilburn Grange School through their school council

Here are some of the things that the school council mentioned that they feel could improve our neighbourhood:

- There is lots of rubbish on the ground and it doesn't appear to be cleaned regularly. Also, there isn't a rubbish bin on our school road which they feel could help with the rubbish. However, sometimes people seem to put out their old furniture on the street instead of disposing of it correctly.
- There is a hole in the ground in the front of our school building that Brent hasn't yet fixed.
- There are lots of homeless people on the streets and the children said sometimes this makes them feel unsafe.
- There could be more flowers and trees on the high street/Priory Park Road to make it look nicer.
- The high street is very busy and crowded and sometimes there isn't a lot of space to walk on the pavements. Also, the road is very busy and has a lot of traffic.

Staff were asked to complete the survey so some may have. However, the staff have very similar views to the children. These other details add to the children's points:

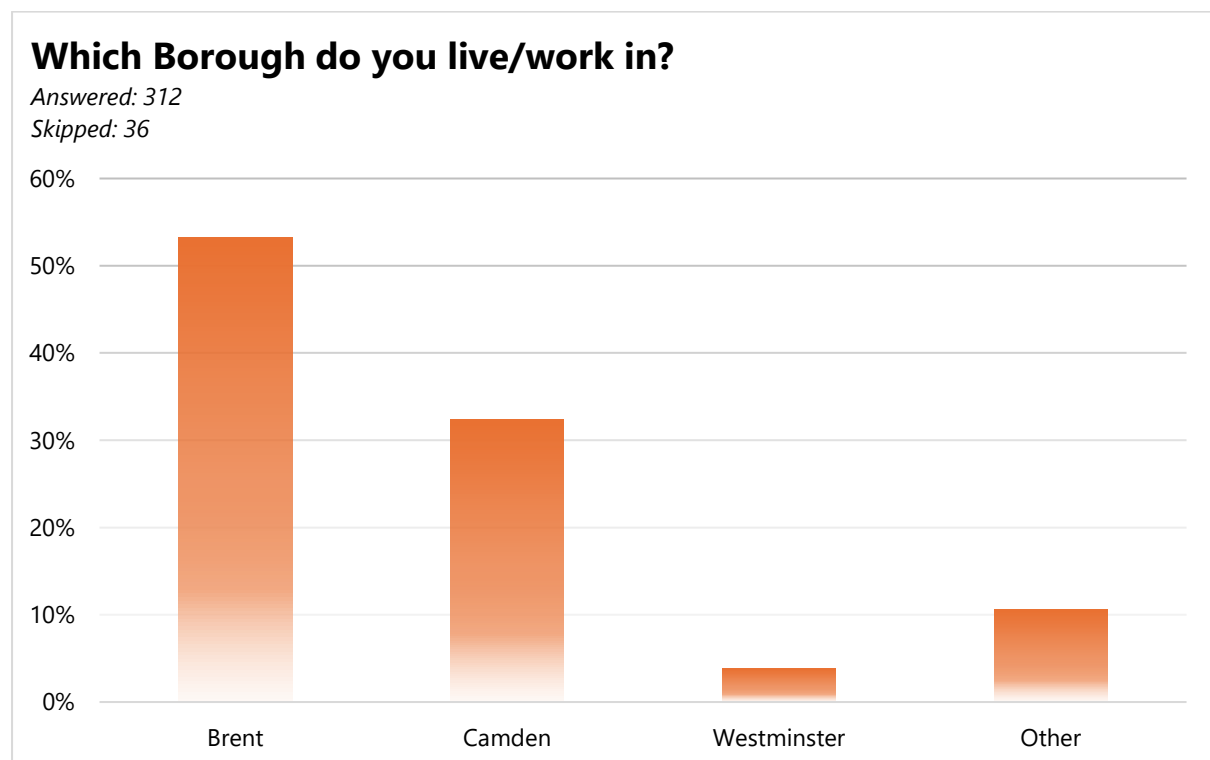
- There is a lot of fly-tipping as the children mentioned so this needs addressing. Staff feel not only additional rubbish bins needed to be put out but also a place to dispose of cigarette butts.
- The hole in the ground was reported to Brent who said it is not a priority! It was caused by some construction work that was completed and the builders didn't put the concrete slabs back correctly, causing them to sink and creating a hole in the ground.
- There also isn't an awful lot of lighting on Priory Park Road and it feels quite dark on our street during the wintertime.
- The pub next door isn't doing its duty in keeping their pavement clean. We often see lots of glasses and bottles smashed on the pavement outside of it after parties that occur during the weekends.
- We often have the Safer Neighbourhood Team/police involved to deal with homeless people, possible drug dealing and other anti-social behaviour. Whilst their approach at the moment is very reactive, the staff feel a more proactive and pre-emptive approach is needed to tackle this in the neighbourhood. Kilburn remains a red area of alert for gang activity, but little seems to be done about it. For example, even the presence of more police would be helpful, but doesn't happen. The alleyway across the street from our school is an example of

an area that is often dirty, full of drug paraphernalia, homeless people and particularly unsafe.

- Having Priory Park Road a no-car zone would make the street not only safer but also quieter. Using this space to create a little green space would be a lovely way to brighten up the street. With the building across the street from our school finally being renovated to become a hotel (it was empty and in a very bad state for many years), this is a good opportunity to make this road look more appealing.

APPENDIX 9

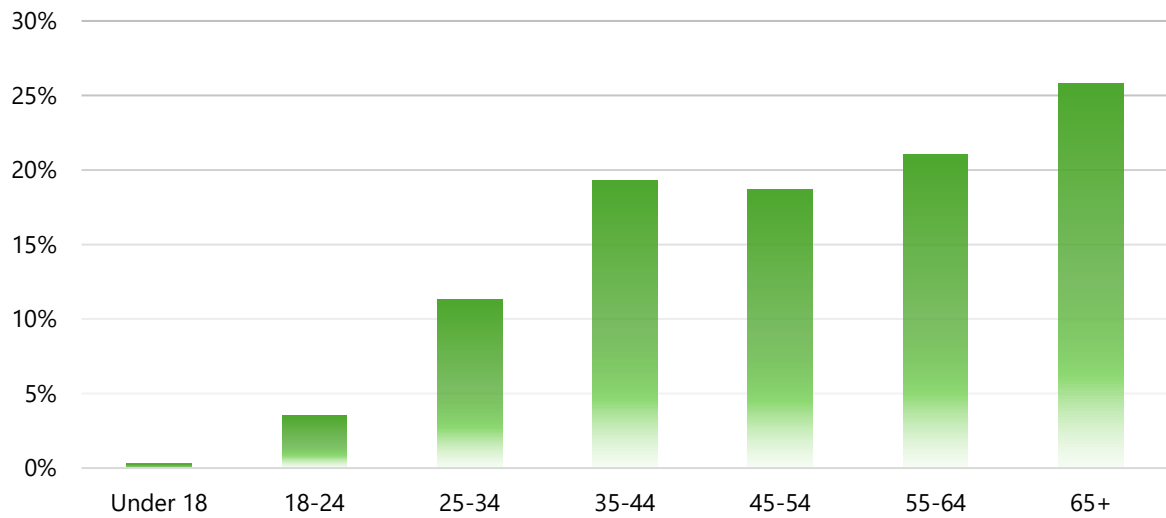
Responses from consultation questionnaire/survey



How old are you?

Answered: 337

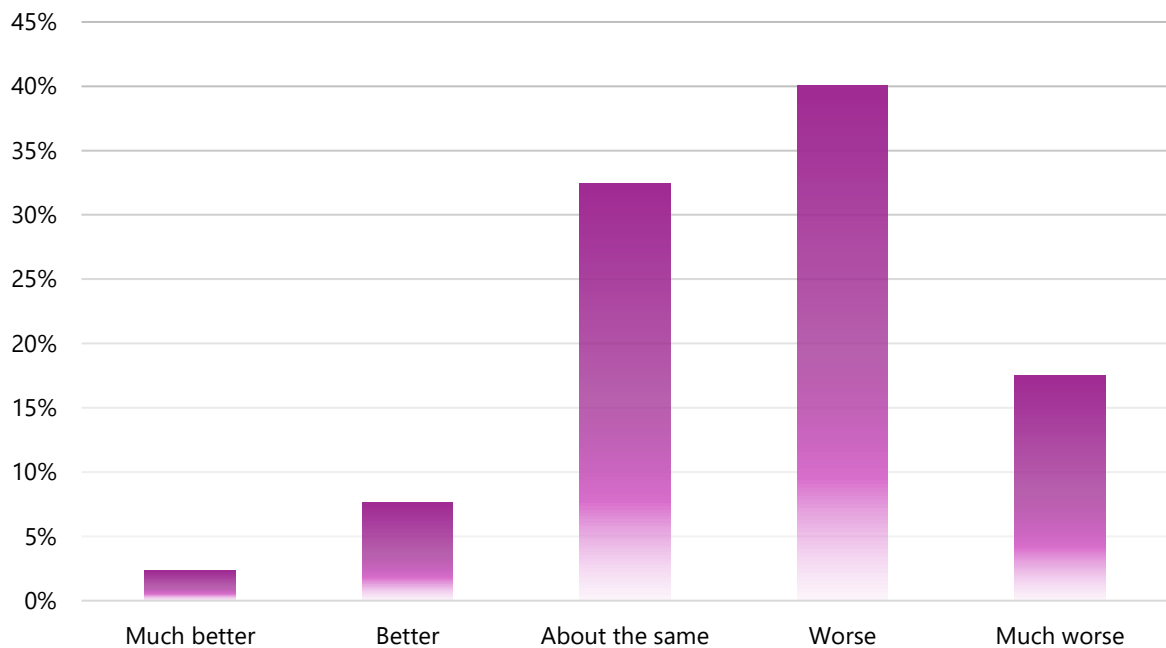
Skipped: 11



Over the past 3 years do you think that Kilburn has become/is?

Answered: 342

Skipped: 6

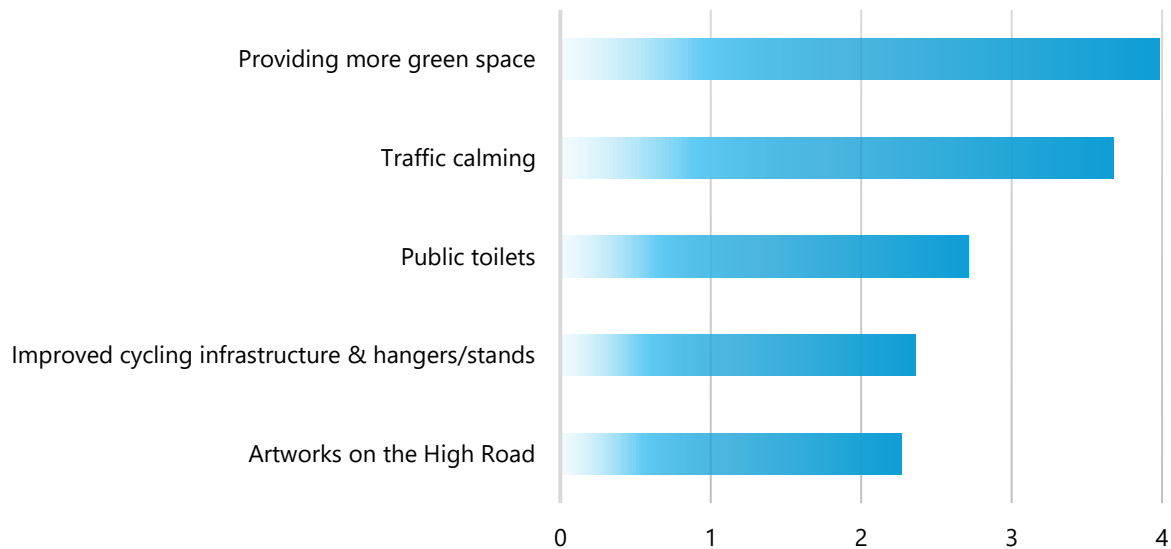


Projects, ranked in order of preference

Answered: 331

Skipped: 17

Weighted average of preferences expressed



How would you improve the pedestrian experience of Kilburn High Road?

Answered: 335

Skipped: 13

Weighted average of preferences expressed

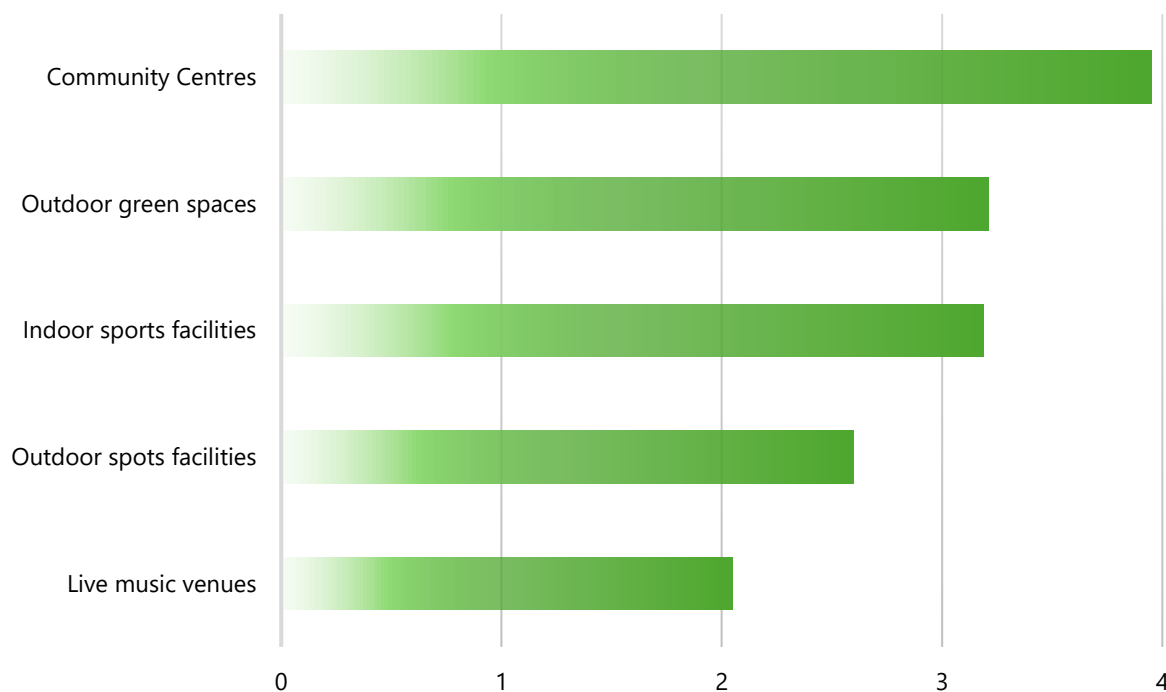


Which type of community facility does Kilburn need?

Answered: 317

Skipped: 31

Weighted average of preferences expressed

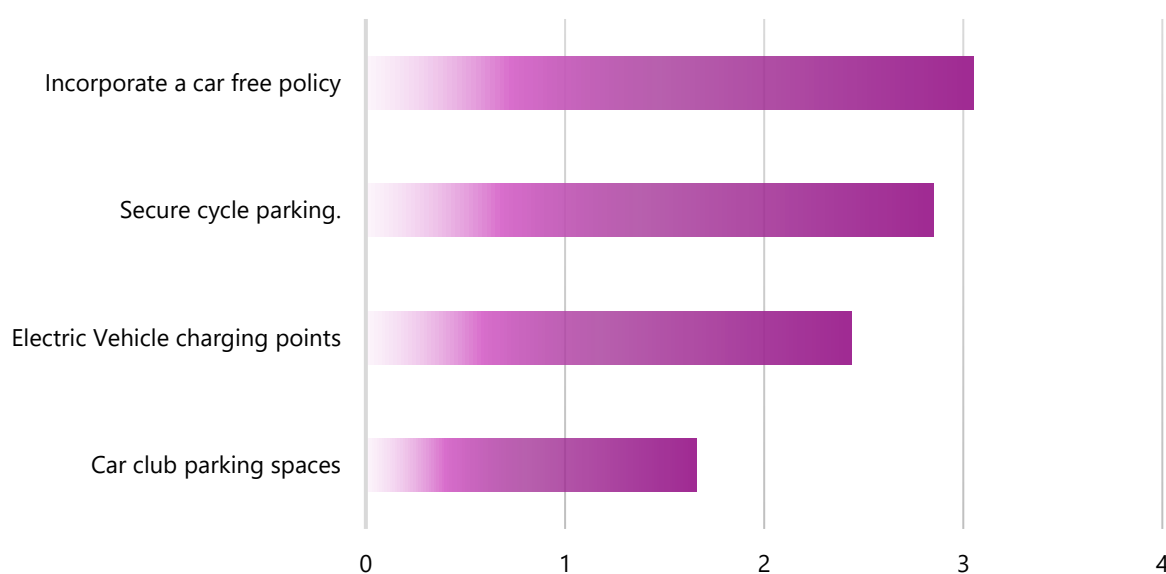


For large planning applications what is the most important?

Answered: 282

Skipped: 66

Weighted average of preferences expressed

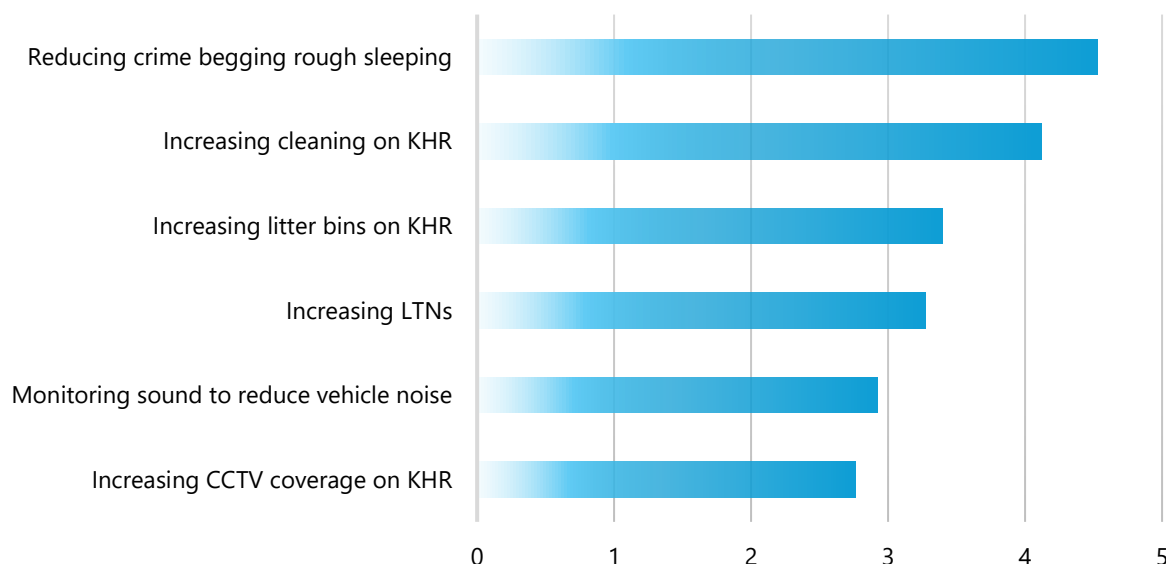


The Plan encourages active, healthy and safer neighbourhoods by...

Answered: 332

Skipped: 16

Weighted average of preferences expressed

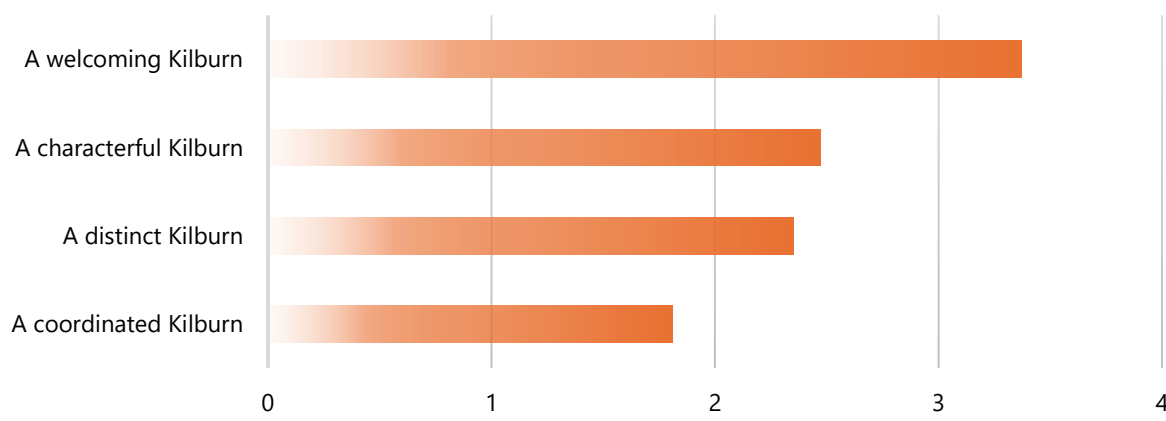


The plan has 4 key objectives, ranked below

Answered: 300

Skipped: 48

Weighted average of preferences expressed



Definitions of the above

A welcoming Kilburn: to enhance the experience of the High Road for residents and visitors by improving the streetscape, reduce unnecessary clutter, better lighting, improve crossing points. Support the revitalisation of unused or left-over spaces, though artwork or lighting. See page 18 of the Plan, Project Box A.

A characterful Kilburn: to promote high levels of design that respond to the local character and existing high-quality architecture. See page 29 of the Plan, Project Box D, of the Plan: Active, healthy, clean and safer neighbourhoods.

A distinct Kilburn: to preserve, enhance and promote the distinct identity and architectural heritage of Kilburn. To improve the retail (Shopping) offer. To support the protection of existing and future provision of cultural, leisure, entertainment and creative venues See page 33, of the Plan, Policy DK1.

A coordinated Kilburn: to present a coordinated voice and Governance structure to oversee the continuous improvement of Kilburn. See page 37 of the Plan, Project box F.

APPENDIX 10

Timeline of key meetings, events and publications 2014-2023

Type of events	Date	Event	Contents of the event	Sources and links
KEY STAGE 1 – 2014-2016, designation stage of the consultation				
Meeting	15-Jul-2014	Launch meeting of Kilburn Neighbourhood Forum	Introduction to the framework of Kilburn neighbourhood planning and the forum, including funding and support	Minutes file: 14.07.15
Meeting	31-Jul-2014	First Steering Group Meeting	Kilburn Neighbourhood Plan name -decided	File 14.07.31
Meeting	7-Aug-2014	Second Steering Group Meeting	1) The role of KNPF in the community and the Neighbourhood Plan for the future 2) Drafting of the constitution & building local network	Minutes file: 14.08.07
Meeting	16-Oct-2014	Kilburn Neighbourhood Plan Forum: Steering Group Meeting.	Discussion of aims and objectives	Minutes file: 14.10.16
Meeting	20-Nov-2014	Kilburn Neighbourhood Plan Forum: Steering Group Meeting	1) Restating the boundary of the KNPF 2) Preparing for consultation on the neighbourhood area 3) Website proposals	Minutes file: 14.11.20
Consultation	1-Jan-2015	Consultation on Forum Area	Start of public consultation on the Neighbourhood Area	
Communication	15-Jan-2015	Web site launched	First KNPF website launched	
Meeting	29-Jan-2015	Kilburn Neighbourhood Plan Forum: Steering Group Meeting	1) Meeting with Camden and Brent planning officers about the final map area 2) Preparation for consultation including online survey, face-to-face events, leaflet distribution	Minutes file: 15.01.29
Meeting	23-Feb-2015	Kilburn Neighbourhood Plan Forum: Steering Group Meeting	Discussion of results of the consultation on the Neighbourhood Area	
Meeting	23-Mar-2015	Kilburn High Road Workshop Consultation	The first forum meeting discussed membership, forum constitution, timelines of actions needed with the 'application for designation' indicating Kilburn High Road as the main area of concern.	Minutes file: 15.03.23
Meeting (IGM)	8-Jul-2015	KNPF Inaugural General Meeting	Update on Digital Noticeboard GLA Spacemaker project and presentation by Sandor Fazekas (Brent) of plans for KHR. 37 attendees worked in small groups to establish regular working groups	

Meeting	15-Jul-2015	Management Committee first meeting	Committee members agreed the formation of groups targeting priorities	
Letter	23-Oct-2015	Application for Forum designation	A request submitted for building up a neighbourhood planning forum in Kilburn	https://kilburnforum.london/wp-content/uploads/2018/03/forum-application-kilburn-29.01.16.pdf
Letter	18-Jan-2016	Letter sent for Area designation	Details of the Neighbourhood Area sent to Brent and Camden Councils	https://kilburnforum.london/wp-content/uploads/2018/03/area-application-kilburn.03.02.16.pdf
Research publication	1-Jun-2016	Kilburn Neighbourhood Plan Research & Appraisal	A report providing a 'snapshot' of Kilburn at the time by We Made That	e.google.com/file/d/0B4dex8jSvmfYWkpweXq2bkZjN2s/view?invite=CIWn-Jwl&ts=6659f7a5&resourcekey=0-K5O1QkS_yh7oyNoCPCfyUQ
Key event	3-Jun-2016	Designation by councils	Brent and Camden Councils designate the Kilburn Neighbourhood Plan Forum	
Meeting (AGM)	18-Oct-2016	Kilburn Neighbourhood Plan Forum Annual General Meeting	Maggy Mead-King presented her experiences with the Highgate Neighbourhood Forum, and "Reza Shirazi, Oxford Brookes University presented his research into social sustainability in Kilburn	Minutes file: 16.10.18
KEY STAGE 2 – 2017-2019, research and design stage				
Research publication	1-May-2017	Anglia Ruskin University students' report on Kilburn High Road	Four groups of students each focused on different aspects of Kilburn High Road	https://kilburnforum.london/evidence/
Research publication	1-Jun-2017	AECOM carried out Kilburn socio-economic profile	Study included the demographics, households & housing, local economy, and health (area slightly different from designated) area	https://drive.google.com/file/d/0B4dex8jSvmfYNms4WGdjV0VpS3o1SmxHZzdXTi1ROXFjNmJJ/view?invite=CMTfrocO&ts=6659f777&resourcekey=0-VOylcXV0LYvZTGv2tzrG9w
Meeting (AGM)	14-Nov-2017	Kilburn Neighbourhood Plan Forum Annual General Meeting	Members offered many inspiring ideas to engage with the community.	Minutes file: 17.11.14
Meeting	27-Mar-2018	Members Meeting	Considered the findings of the AECOM report and relevance to the draft plan	Minutes file: 18.03.27
Communication	4-Apr-2018	Reconstructed website launched	A revised website launched with additional content and improved presentation	https://kilburnforum.london/

Research publication	1-Jun-2018	An analysis of current condition, and data of the KNPF plan area	Two linked documents providing an analysis of the data on the KNPF plan area by InformAll and Udenson Caldbeck	https://kilburnforum.london/new-evidence-report/
Meeting	3-Jul-2018	Members consultation meeting	Discussion of 'Current conditions' report by InformAll and Udenson Caldbeck	
Meeting (AGM)	4-Dec-2018	Annual General Meeting and Open Members Meeting	Presentation by Dick Weindling on history of Kilburn. Discussion of KNPF future, discussion of Brent Local plan	Minutes file: 18.12.4
Meeting	25-Apr-2019	Members' consultation meeting - draft AECOM design report	AECOM design report - discussion of draft & Opportunities for Cil funding	
Research publication	18-Jul-2019	AECOM design report received	KNPF receives the revised, final version of the AECOM design report	
Meeting	30-Jul-2019	Members' open meeting	Help to create the vision for Kilburn	https://kilburnforum.london/members-meeting/
Research publication	1-Aug-2019	2nd AECOM report completed	Neighbourhood Plan Visioning Document - research support from AECOM	https://kilburnforum.london/wp-content/uploads/2019/09/KNPF-2019-Kilburn-visioning-document-Final.pdf
Consultation	1-Oct-2019	Kilburn Night Time Economy Action Plan consultation	Feedback collection for the Night Time Economy in Kilburn	https://kilburnforum.london/night-time-economy-in-kilburn/
KEY STAGE 3 – 2020-2022, Covid period, aims and visions				
Meeting (AGM)	8-Feb-2020	Kilburn Neighbourhood Plan Forum Annual General Meeting	Workshop discussions on : Environment, community and Business and agree schedule to write the draft plan	Minutes file: 20.02.08
Meetings	26-Mar-2020	Committee Members Meeting, every fortnight	Covid lockdown begins	
Annual General Meeting	17-Mar-2021	Kilburn Neighbourhood Plan Forum Annual General Meeting	Key note speakers from Camden and Brent Council focus on KHR High Street renewal, Camden and Brent to form an internal officers' group	Minutes file: 20.02.08
Key event	3-Jun-2021	Designation of Forum ended	The Forum designation for a five year period ended and an application for redesignation had to be made	
Meeting	22-Sep-2021	Committee meeting with Camden officers	Meeting with Camden officers and others about plans for 'town centres' which eventually emerged as One Kilburn	Minutes file: 21.09.22
Key event	1-Nov-2021	Troy Consultants appointed to write draft plan	Agreement between KNPF and Troy Consultants confirmed and the start of writing the Neighbourhood Plan	
Meeting	3-Nov-2021	Committee Members Meeting	Meeting with Troy consultants to discuss 7 key questions re drafting the Plan	Minutes file: 21.11.03

Meeting	23-Nov-2021	Walkabout with Troy Consultants	Visit to the Kilburn Neighbourhood Area in preparation for the draft plan	
Key event	1-Dec-2021	Draft plan submitted to Committee	The Forum Committee receive the first version of the draft plan	
Key event	17-Dec-2021	Conclusion of consultation on redesignation	Brent and Camden Councils confirm their consultation of the redesignation of the Forum is completed	
Key event	7-Feb-2022	KNPF redesignated	Brent and Camden Councils redesignate the Forum from 7th February 2022 to 6th February 2027	
Meeting	10-Feb-2022	Special KNPF meeting / workshop	Extended meeting to discuss the draft plan submitted by Troy Consultants	
Meeting	22-Mar-2022	Special members meeting with Bartlett UCL students' final presentations	Student projects on Strategic vision to Urban Plan 2021 - 22 followed by discussion	
Meeting (AGM)	6-Apr-2022	Kilburn Neighbourhood Plan Forum Annual General Meeting	Discussion of draft consultation plan, guest speakers Tom Baines, Kate Goodman, Paul Lewin	Minutes file: 22.04.06
Key event	13-Jun-2022	Comments on draft plan received	Joint comments by Brent and Camden officers received by KNPF committee	
Consultation	9-Jul-2022	Kilburn Festival in Grange Park	Stall organised at annual open air event to publicise the Forum and collect views on the plan. Student posters used for display	
Meeting	26-Nov-2022	Members and Supporters Meeting	Presentation on emerging One Kilburn (Kilburn across Brent, Camden and Westminster) by officers from Camden and Brent	Minutes file: 22.11.26
Key event	30-Nov-2022	Resubmitted the amended draft plan to Councils	The Forum officers carefully considered the joint comments received from the Councils' officers and amended the draft Plan accordingly.	
KEY STAGE 4 – 2023, preparing for Regulation 14 consultation				
Meeting	23-Jan-2023	One Kilburn event at the Kiln, Forum presents to an invited audience	KNPF with other organisations presented its work at a large meeting organised jointly by One Kilburn and the Kiln and held in the Kiln Cinema	
Key event	25-Jan-2023	Further comments received from Councils on the Draft Plan	The requirement to revise the draft further was a disappointment to the Committee, and introduced further delay to the process	
Meeting (AGM)	14-Mar-2023	Kilburn Neighbourhood Plan Forum Annual General Meeting	Highlighted many local issues and campaigns including opportunities for greening, public art and traffic calming	
Key event	8-Jun-2023	Resubmission to the Councils of the amended Draft Plan	The draft Neighbourhood Plan with further changes and a number of questions was re-submitted to Brent and Camden Councils	

Consultation	22-Jun-2023	Councils started SEA	The two Councils inform KNPF the draft plan is acceptable and they can start the Strategic Environmental Assessment (SEA)	
Consultation	15-Jul-2023	Kilburn Festival in Grange Park	KNPF attend the annual event and pilot some of the approaches being prepared for the public consultation (Regulation 14)	
Key event	13-Sep-2023	Permission for Reg 14 consultation to begin	KNPF committee informed SEA is completed and the formal Regulation 14 consultation can begin	
Key event	1-Oct-2023	Regulation 14 Consultation begins	See the Consultation Statement	